

Volunteer Notebook



M I Z Z O U

OUR TIME TO
LEAD

Welcome from the Vice Chancellor of Advancement

Thank you for your service and support of MU. As one of our important volunteers, we have compiled the material in this resource book to help you better understand and communicate the purpose of the ***Mizzou: Our Time to Lead*** campaign, which will focus on three priorities:

Endowment — Building our endowment to compete with other institutions will strengthen our ability to attract and retain stellar students and faculty.

Signature Centers and Institutes — Interdisciplinary centers and institutes will be the engine of research growth that will enhance our AAU status and attract additional funding.

Campus Renaissance — New and renovated facilities will propel Mizzou to global leadership in education and research.

On the following pages you will find information on our priorities and how your support will impact MU. You'll also find campus contact information and resources to support you as an advocate for Mizzou. As a reminder,

- Mizzou is the oldest public university west of the Mississippi River.
- We are a major land-grant institution with a statewide mission of service to citizens and we are Missouri's largest public research university.
- We are one of only 34 public universities, and the only public institution in Missouri, to be selected for membership in the prestigious Association of American Universities.
- We created the world's first and best school of journalism.
- Our student-athletes play in the SEC, the most competitive conference in collegiate athletics.
- Our alumni go on to change the world as CEOs, entrepreneurs, senators and presentatives, doctors, nurses, lawyers, and other professionals.

With these strengths in our favor, there is simply no reason why Mizzou should take a backseat to anyone. The ***Mizzou: Our Time to Lead*** campaign will build on our foundation of excellence to establish Mizzou as a destination university for the world's best students and faculty.

I invite you to visit our website (giving.missouri.edu/campaign) for campaign progress updates and stories of how donor support makes a real-world impact on our campus every day.

On behalf of the University of Missouri, thank you for choosing to volunteer for the ***Mizzou: Our Time to Lead*** campaign. This \$1.3 billion fundraising effort is vital to Mizzou's continued greatness. We will be successful because of the support of generous alumni and friends like you.

Sincerely,



Thomas S. Hiles
Vice Chancellor
University Advancement

Why Your Support Matters

What difference will it make to the students, the faculty and the staff at MU when we raise more than \$1 billion? Indeed, what difference will our success mean to Missourians and partners around the nation and globe if we raise more than \$1 billion?

Private investment will change the face of MU. Our goals are to:

- Build MU's Endowment
- Create Signature Centers and Institutes
- Foster a Campus Renaissance

Close to home, our success will build MU's endowment and make us highly competitive with peer institutions for students, faculty, research dollars and athletic prowess. A healthy endowment allows us to be certain that we will always be able to provide funding for our top priorities, maintain a vibrant scholarship base and attract and retain our scholar teachers.

Comprehensive campaigns such as ***Mizzou: Our Time to Lead*** reaffirm the University of Missouri's commitment to what endures while making the case for what's to come. At its heart, a university exists to enhance society and improve our quality of life through education. What happens beyond that, by whom and for whom, is what sets the University of Missouri apart. The history of MU is one of people with vision -- those who saw the need for a state university and what it could do for society and took action to make that dream a reality. It's ***Mizzou: Our Time to Lead***.

Mizzou: Our Time to Lead will:

- Advance teaching and learning
- Expand discovery
- Promote globalization
- Enrich the arts and creativity
- Maximize innovation to increase economic development

When we are successful, we will have a model for leveraging state and private support for priorities such as endowed scholarships, endowed faculty positions and capital projects.

All of our constituencies will have renewed pride in Mizzou. All of us — students, faculty, alumni, donors, parents, researchers, patients, fans and the state legislature — will be proud that Mizzou invites and rewards investment and deep commitment.

All of the economic benefits that a top-tier university provides to the region, the state, the nation and the world will increase.

Our vision for ***Mizzou: Our Time to Lead*** is clear and we invite you to join us. Together we will embrace the Mizzou spirit. Your engagement and your gifts are what will make this campaign a success. We value beyond measure your loyal support and are encouraged by the generosity of all who are with ***Mizzou: Our Time to Lead***.

Campaign Elevator Speech and Timeline

With an overall fundraising goal of \$1.3 billion, the *Mizzou: Our Time to Lead* campaign will secure the University of Missouri’s status among the nation’s elite public universities by focusing on three priorities:

Endowment — Building our endowment to compete with other institutions will strengthen our ability to attract and retain stellar students and faculty.

Signature Centers and Institutes — Interdisciplinary centers and institutes will be the engine of research growth that will enhance our AAU status and add to our distinctiveness.

Campus Renaissance — New and renovated facilities will propel Mizzou to global leadership in education and research and will help attract and retain students and faculty.

PLANNING PHASE	2012	Campaign counting begins / Planning committee formed
	2013	National Campaign Cabinet meets
	2014	Campaign Case Statement Tour
	2015	October - Public Kickoff
PUBLIC PHASE	2016	Regional Kickoff Events / Hall of Fame Event
	2017	Columns Society Recognition Event
	2018	Impact Alumni Tour
	2019	Final Push
	2020	Surpass campaign goal
	2021	Victory / Thank you Tour

Endowment: A Lasting Legacy

Endowments have benefitted MU students, faculty, facilities, and programs since James Rollins established the first endowment at Mizzou in 1888. Established with a gift of \$6,000, the James S. Rollins Scholarship Fund is now valued at more than \$230,000. Think about that: a scholarship created by one of MU's founders continues to provide scholarship support for the students of today - and tomorrow.

How It Works

Think of an endowment as a fund that is invested and distributions are made each year. By preserving the endowment principal, the distributions can forever fund student scholarships, faculty research, or whatever the donor chooses. Recent changes at MU will help endowments grow over time to keep up with the cost of tuition, salaries, and research.

The minimum amount to establish an endowment may vary but starts at \$25,000, and can be given in installments for up to five years.

How It's Spent

MU distributes 4.5 percent* of the fund's value annually based on a policy that preserves the principal and spending power of the endowment.

By The Numbers

3,626: Total number of active endowments

By Use:

- 33% scholarships
- 23% faculty positions
- 15% programs
- 14% unrestricted
- 15% other

**The formula used to determine the Endowment Pool spending distribution for each fiscal year shall apply a rate of 4.5% to a base equal to the 28-quarter trailing average of market values as of December 31st of the prior fiscal year.*

IF YOU ENDOW A FUND WITH

\$1,000,000 >>>> \$45,000 approximate amount to be distributed

\$250,000 >>>>> \$11,250 approximate amount to be distributed

\$100,000 >>>>> \$4,500 approximate amount to be distributed

\$50,000 >>>>>> \$2,250 approximate amount to be distributed

\$25,000 >>>>>>> \$1,125 approximate amount to be distributed

Signature Centers and Institutes



The Donald W. Reynolds Journalism Institute (RJI) founded in 2004 through support of a \$31 million grant from the Donald W. Reynolds Foundation. The RJI building was completed in 2008 in conjunction with the centennial celebration of the University of Missouri's School of Journalism.

Interdisciplinary collaboration is a Mizzou hallmark. With a wide array of expertise located on the same campus, including schools and colleges of agriculture, arts and science, business, engineering, journalism, law, medicine, and veterinary medicine, Mizzou is an ideal environment for making connections across fields of study to foster learning and discovery that will make a real-world impact.

By combining donor passions with Mizzou's strengths, our Signature Centers and Institutes pull the very best of MU together and provide the framework for interdisciplinary collaboration. Our Signature Centers and Institutes include:

- Thompson Center for Autism and Neurodevelopmental Disorders
- Reynolds Journalism Institute
- Kinder Institute on Constitutional Democracy

We have several more centers and institutes on the horizon, such as the Center for Regenerative Orthopaedics and the Applied Learning Center at the Trulaske College of Business. These centers and institutes will be the engines of growth that will bolster our standing within the prestigious Association of American Universities and significantly increase our endowment. We envision five to 10 fully endowed centers or institutes with endowments of at least \$10 million each as indicators of the *Mizzou: Our Time to Lead* campaign's success.

The University of Missouri, with the Columns at the heart of the “red campus” and the “white campus” anchored by Memorial Union, is a beautiful college setting. To achieve global leadership in research and teaching, however, Mizzou must enhance the physical spaces that enable our faculty and students to do their best work. The ***Mizzou: Our Time to Lead*** campaign will provide funding for critically needed new buildings, as well as renovations to existing facilities.



Thomas and Nell Lafferre Hall is currently undergoing a major renovation that is slated to be completed in December 2016.

While construction jobs are good for the local and regional economy, more important for MU is how capital projects help attract stellar faculty and students. Recent examples of construction benefitting MU include the Reynolds Journalism Institute, the Bond Life Sciences Building, the renovation of Tate and Switzler Halls and the student-funded Student Center and Recreation Center.

Many schools and colleges will have capital projects as part of their strategic priorities for ***Mizzou: Our Time to Lead***. MU’s highest-priority capital projects include:

- Dedicated School of Music building and a renovated Fine Arts Building (College of Arts and Science)
- Applied Learning Center (Robert J. Trulaske, Sr. College of Business)
- Lafferre Hall renovations (College of Engineering)
- Mizzou Sports Park projects (Intercollegiate Athletics)

We will leverage private support to build public/private partnerships. By combining private support with state money, we will honor Mizzou’s formidable architectural traditions while adapting to changing needs.

To care for our buildings is to respect our history. To create new buildings signals growth and momentum. Visible investments in Mizzou’s infrastructure will make our campus come alive and prepare us for the vital work of the future.

There are many ways to give to the University of Missouri based on your goals, as outlined below. For more information, contact the Office of Gift Planning and Endowments toll-free at 1-800-970-9977 or email us at giftplanning@missouri.edu.

*All donors should consult with their attorneys or financial advisers for tax and legal advice.

Immediate Impact

Check/Credit Card	Securities	Real Estate
<p>Send a check or contribute online using your credit card</p> <p>Benefits to You: Simple, tax deductible</p>	<p>Securities may include publicly traded stocks, bonds, or mutual funds</p> <p>Benefits to You: Avoid capital gains tax, tax-deductible</p>	<p>Real estate may be given after approval by the University</p> <p>Benefits to You: Avoid capital gains tax, tax-deductible</p>

Tangible Property

Examples include artwork, antiques, stamp/coin collections, jewelry, furniture, and rare books

Benefits to You: Consult your tax adviser to learn the benefits of gifts of tangible property

Intangible Property

Patents, copyrights, websites, and royalties may be given under certain conditions with the University's approval

Benefits to You: Consult your tax adviser to learn the benefits of gifts of intangible property

Planned Giving

Bequest	Beneficiary Designation	Life Insurance
<p>A bequest is created through your estate plan, such as a will</p> <p>Benefits to You: Flexible, donor retains control throughout lifetime</p>	<p>Fill out a beneficiary form for your insurance policy, retirement or bank accounts</p> <p>Benefits to You: Simple, flexible, takes donated assets out of your taxable estate</p>	<p>Make MU owner of policy as well as beneficiary</p> <p>Benefits to You: Income tax deduction for gift of policy and any premium payments you continue to pay, takes asset out of your taxable estate</p>

If you need income now, you may want to consider a life income arrangement that provides income now with a future gift to the University. For more information, contact the Office of Gift Planning and Endowments toll-free at 1-800-970-9977 or email us at giftplanning@missouri.edu.

*All donors should consult with their attorneys or financial advisers for tax and legal advice.

Income Arrangement

Charitable Gift Annuity

Simple, contractual agreement with the University in which assets are transferred to the University in exchange for life payments

Benefits to You: Immediate tax deduction for portion of gift, annuity payments may be partially tax-free and capital gains tax liability reduced when funded with appreciated securities.

Charitable Remainder Trust

Donate assets to a charitable trust that provides an ongoing stream of income

Benefits to You: Immediate tax deduction for portion of gift, can fund with appreciated securities to reduce capital gains liability, payments for life or term of years, real estate can be used with approval of University

Pooled Income Fund

Similar to a mutual fund, gifts from multiple donors are “pooled.” Prorated shares of the fund’s earnings are distributed to all donors.

Benefits to You: Immediate tax deduction for portion of gift

Retained Life Estate

Give your home or farm now, but continue to live there and retain the right to any income during your lifetime

Benefits to You: Receive current charitable tax deduction and future benefits to your taxable estate



M I Z Z O U
OUR TIME TO
LEAD

Prefer to make your gift or pledge online?
 Please visit giving.missouri.edu.

I would like my gift to benefit:

- Chancellor’s Fund for Excellence 001331
- General Scholarship Fund 180181
- School/College of _____
- Other _____

I am making this gift in honor/memory of (optional) _____

How I would like to donate:

Single Contribution

- I/we wish to make an outright gift of \$_____ payable to the “University of Missouri” (CHECK ENCLOSED)
- Please charge this gift of \$_____ to my/our credit card.

Recurring Gift

- I/we promise to make our gift in equal installments of \$_____ beginning in (month/year) for a total amount of \$_____.
- I/we intend to make payments: Weekly Monthly Quarterly Annually

Matching Gift

- This pledge includes anticipated \$_____ in matching gifts from _____.

Giving information

- My check, payable to the University of Missouri, is enclosed.
- Please charge my credit card: Visa MasterCard Discover AMEX

CARD NUMBER _____ EXPIRATION DATE _____

SIGNATURE _____ PRINT NAME _____

Gifts are tax-deductable to the fullest extent allowed by law.

Help us say thank you

Your gift may qualify you for membership in one of the university’s recognition societies.

- I/we wish my/our name(s) to read as follows on honor rolls: (PLEASE PRINT)

NAME(S) _____

- I/we prefer my/our name(s) to be confidential.
- I/we would like information on membership in the Columns Society, Jefferson Club, or Legacy Society.

Please return this form to:

UNIVERSITY OF MISSOURI GIFT PROCESSING
 407 REYNOLDS ALUMNI CENTER
 COLUMBIA, MO 65211

Thank you for your support.

PHONE: 573-882-0256
 TOLL FREE: 866-267-7568
 GIFTPROCESSING@MISSOURI.EDU

Office of Gift Planning and Endowments
Estate Gift Intention Form



So that we may properly thank you and acknowledge your future gift to Mizzou, please complete the following information about your future gift.

	/ /		/ /
Name	Date of birth	Spouse Name (if applicable)	Date of birth
Mailing address		Telephone (residence)	
City	State	Zip	Telephone (business)

Type of Gift

- Will
 Living Trust
 Life Insurance
 Retirement Plan
 Other: _____

Description of Gift

Please describe the nature of your gift to Mizzou (for example - percentage of estate, specific dollar amount, description of specific property, etc.)

As of today's date, I estimate the value of this provision in my estate plan to be \$ _____

- This is a "contingent" gift (MU is an *alternate* beneficiary and will only receive the gift under certain circumstances.) Please describe the contingent arrangements:

Purpose of Gift

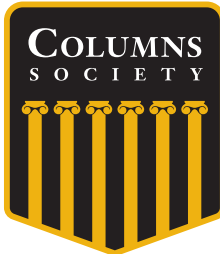
- This is an unrestricted gift.
 This gift is to be used for the following purpose or program:

I/We understand that this is not a legal or binding commitment on my/our estate. MU should understand that the size of this future gift may be significantly different from the amount estimated above. If for any reason in the future Mizzou is no longer included in my/our plan, I/we will notify you so that you can update your records.

	Date		Date
<i>Signature</i>		<i>Signature</i>	

Please return to:
 Office of Gift Planning and Endowments ▪ University of Missouri
 302 Reynolds Alumni Center ▪ Columbia, MO 65211 ▪ 800/970-9977 ▪ Fax 573/884-5144

Private giving is essential to MU's ability to succeed and provide for the future, and we want to thank alumni and friends for the roles they play. The university honors individuals who give at certain levels through membership in various giving societies, including the Jefferson Club, Chancellor's Society, Legacy Society and the societies of our schools, colleges and programs.



COLUMNS SOCIETY

The Columns Society recognizes donors who make it a priority to support MU year after year. Donors who make annual gifts totaling \$2,500 or more during an academic year are recognized by membership in the Columns Society. Young alumni and friends (35 and under) and MU faculty and staff qualify with annual gifts of \$1,500 or more.

Web: giving.missouri.edu

Phone: (573) 884-3672 | Email: columns-society@missouri.edu

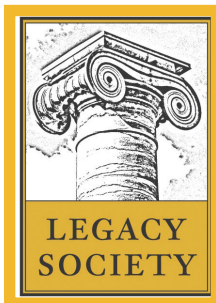


JEFFERSON CLUB

Jefferson Club recognizes donors whose lifetime giving totals \$25,000 or more. All gifts and pledges count toward this total.

Web: jeffersonclub.missouri.edu

Phone: (573) 882-6511 | Email: jeffersonclub@missouri.edu



LEGACY SOCIETY

Planned gifts create the margin of excellence at Mizzou. Donors who establish a planned gift of any amount qualify for membership in the Legacy Society.

Web: legacysociety.missouri.edu

Phone: (800) 970-9977 | Email: giftplanning@missouri.edu

Named Gift Guidelines

Named Gift Guidelines

Establishing a named gift to support students, programs, facilities, or faculty creates a legacy on campus while affirming the impact of a Mizzou education. MU offers various named gift opportunities, with minimum amounts described as follows. Naming opportunities are approved in accordance with University policy.

Naming Opportunity	<i>Mizzou: Our Time To Lead</i> Campaign Endowment
Endowed Named Scholarships	
Endowed Named Scholarship	\$25,000 minimum
Flagship Scholarship	\$300,000 - \$1.2 million
Faculty Positions (Endowed)	
Faculty Scholar	\$100,000 - \$250,000
Professorship	\$1 million
Chair	\$1.5 million - \$2.5 million
Dean	\$5 million
Other Endowed Funds	
Minimum Endowment	\$25,000
Fund for Excellence	\$50,000
Research Fund	\$100,000
Lecture Series:	
Department Lecture Series	\$25,000
School or College Lecture Series	\$100,000
Campus Lecture Series	\$1 million
Programs	
School or College	\$30 million - \$100 million
Center/Institute	\$5 million - \$25 million
Department/Academic Unit	\$5 million - \$25 million
Facilities and Spaces	
Buildings (New Construction)	Minimum of 25-50% of the construction cost
Buildings (Existing)	Minimum of 25-50% of the construction cost for renovation/replacement
Other spaces (Interior & Exterior)	University discretion based on factors such as size, location, usage
Endowed Athletics Positions	
Head Football Coach	\$5 million
Head Men's Basketball Coach	\$5 million
Other Head Coaches	\$2 million
Assistant Coaches	\$1 million

Philanthropy is based on voluntary action for the common good. It is a tradition of giving and sharing that is primary to the quality of life. To assure that philanthropy merits the respect and trust of the general public, and that donors and prospective donors can have full confidence in the not-for-profit organizations and causes they are asked to support, we declare that all donors have these rights:

- To be informed of the organization's mission, of the way the organization intends to use donated resources, and of its capacity to use donations effectively for their intended purposes.
- To be informed of the identity of those serving on the organization's governing board, and to expect the board to exercise prudent judgment in its stewardship responsibilities.
- To have access to the organization's most recent financial statements.
- To be assured their gifts will be used for the purposes for which they were given.
- To receive appropriate acknowledgment and recognition.
- To be assured that information about their donations is handled with respect and with confidentiality to the extent provided by law.
- To expect that all relationships with individuals representing organizations of interest to the donor will be professional in nature.
- To be informed whether those seeking donations are volunteers, employees of the organization or hired solicitors.
- To have the opportunity for their names to be deleted from mailing lists that an organization may intend to share.
- To feel free to ask questions when making a donation and to receive prompt, truthful and forthright answers.

The following pages contain contact information for advancement offices equipped to help you based on your geographic location or area of interest.

We appreciate your interest in supporting the University of Missouri and we want to make it as easy as possible for you to contact our advancement team. Wherever you live, our advancement team is happy to assist you.

Mizzou Advancement

407 Reynolds Alumni Center
Columbia, MO 65211
Phone: 573-882-6511
Email: GiftProcessing@missouri.edu
giving.missouri.edu

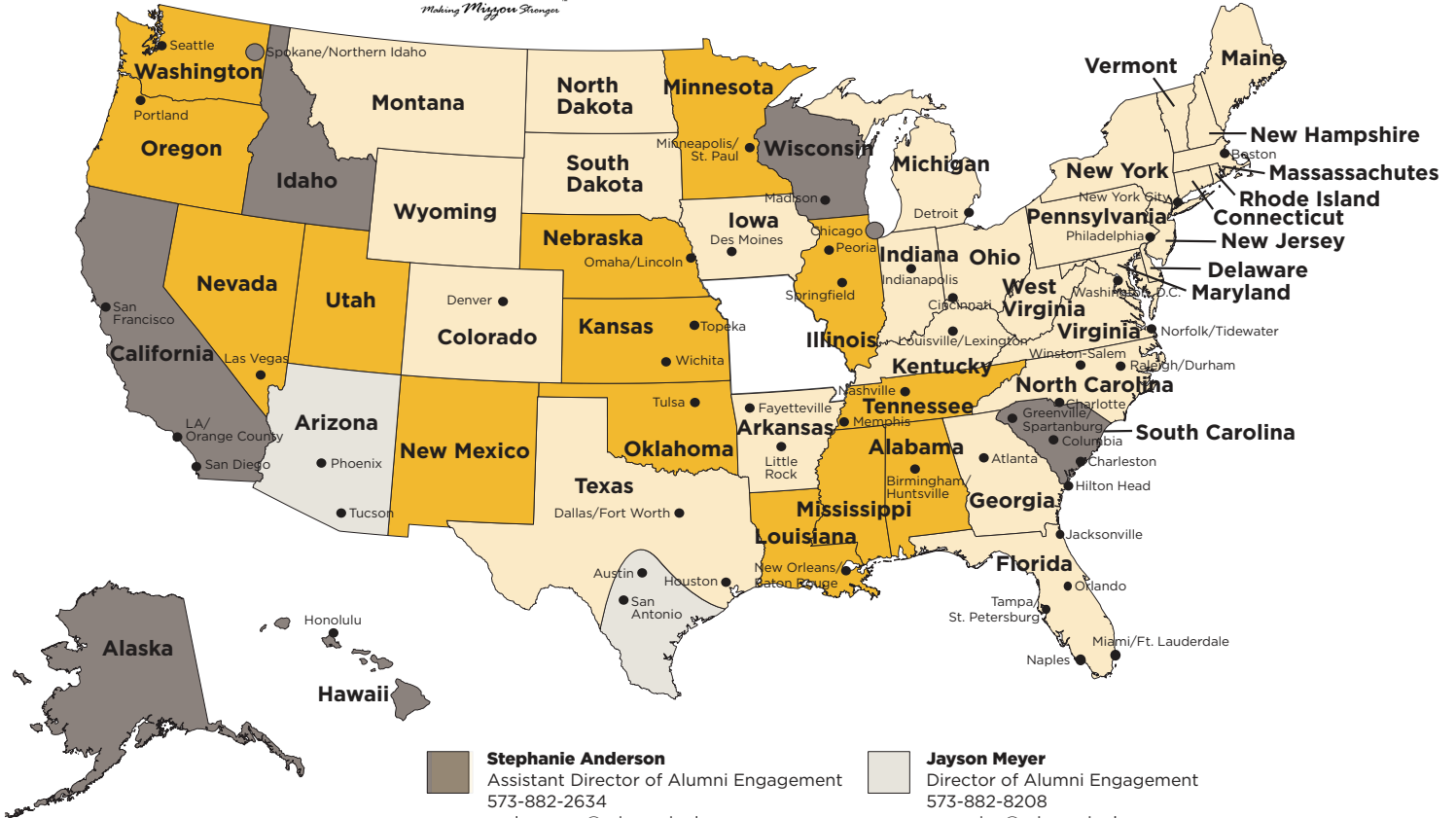
Mizzou Alumni Association

123 Reynolds Alumni Center
Columbia, MO 65211
Phone: (800) 372-6822
Email: MAA@missouri.edu
mizzou.com

The Mizzou Alumni Association relies on the help of more than 1,300 volunteers nationwide to serve the best interests and traditions of Missouri's flagship university. Volunteers are the lifeblood of the association and honor Mizzou with their dedicated service.



Mizzou Alumni Association Active Chapter Map - USA



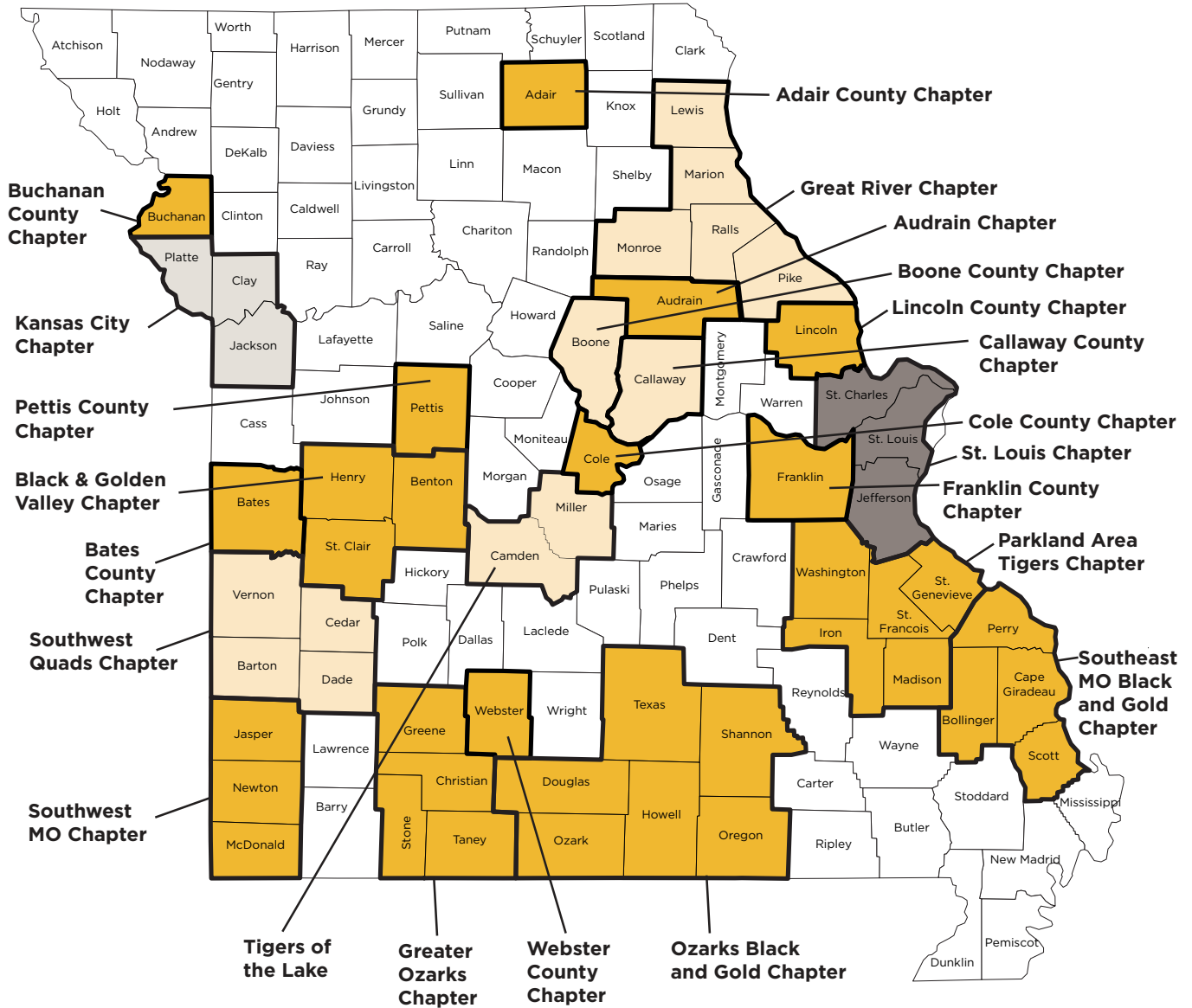
- | | |
|---|---|
| <p>Stephanie Anderson
Assistant Director of Alumni Engagement
573-882-2634
andersonsa@missouri.edu</p> | <p>Jayson Meyer
Director of Alumni Engagement
573-882-8208
meyerjay@missouri.edu</p> |
| <p>Mollie Landers
Coordinator of Alumni Engagement
573-884-7032
landersms@missouri.edu</p> | <p>Molly Richardson
Assistant Director of Alumni Engagement
573-882-3941
richardsonmo@missouri.edu</p> |

Map last updated August 2015



Mizzou Alumni Association Active Chapter Map - Missouri

Map last updated August 2015



Stephanie Anderson
Assistant Director of Alumni Engagement
573-882-2634
andersonsa@missouri.edu

Jayson Meyer
Director of Alumni Engagement
573-882-8208
meyerjay@missouri.edu

Mollie Landers
Coordinator of Alumni Engagement
573-884-7032
landersms@missouri.edu

Molly Richardson
Assistant Director of Alumni Engagement
573-882-3941
richardsonmo@missouri.edu

Below is a list of presidents for each of the Mizzou Alumni Association geographic alumni chapters. To visit the chapter website or contact a president visit Mizzou.com and click on “Groups,” and then choose the “Alumni Chapter Locator.”

Audrain County Chapter | Tony Robertson
Bates County Mizzou Club | Bryan Milligan
Bay Area Tigers Chapter | Carson Reese
Boone County Chapter | Denise Falco
Buchanan County Chapter | John Garvey
Callaway County Alumni Chapter | Timothy Conner
Capital Area Tigers | Jennifer Paul
Central Florida Alumni Chapter | Matt Friedman
Central Iowa MU Alumni Chapter | Jim Rothermich
Central Iowa MU Alumni Chapter | Jessica Wardenburg
Chicago Alumni Chapter | Michael Wojtychiw
Cole County Chapter | Mark J. Baker
Dallas/Ft. Worth Mizzou Tigers | Bill S. Richmond
Franklin County Chapter | Kim Voss & Rich Buckman
Greater Boston Alumni Chapter | Lindsey Hoffman
Greater Ozarks Alumni Chapter | Andy Stewart
Greater Peoria Alumni Chapter | Dustin Johansen
Houston Texas Tigers | Mary Beth Mosley
Indiana Mizzou Crew Alumni Chapter | Bret Pogemiller
Kansas Area Tigers | Cheryl Wiss
Kansas City Alumni Chapter | Jeff Zumsteg
Korea Ag Alumni Organization | Yang Boo Choe
Korea Alumni Chapter | Heung Kil Ko
LA/Orange County Alumni Chapter | Adam Phillip Gafke
Las Vegas Alumni Chapter | David Conrado
Lincoln County Chapter | Kelsey Flynn
Little Rock Chapter | Mallory Lindsey
Memphis/Mid-South Alumni Chapter | Julie Lynn Cameron
Metro Atlanta Alumni Chapter | Brent Adams
Miller County Chapter | Rick Caine
Mizzou Philly Chapter | Brittany Root
Morgan County Chapter | Kevin Paul Schehr
Motor City Tigers | Deborah Diers
Music City Mizzou | Justin Shepherd
New York Alumni Chapter | Rebecca Johnson
Northeast Florida Chapter | Matt Krueger
Northwest Arkansas Chapter | Heather A. Martinelli
Ozarks Black & Gold Chapter | Betty L. Stock & Marge Slayton
Oregon Trail Tigers Chapter | Debra Weekley
Rocky Mountain Tigers | Rusty Martin
San Antonio Alumni Chapter | Brad Lehman
San Diego Alumni Chapter | Jane Wagner
Seattle/Puget Sound Alumni Chapter | Chris Ward

Below is a list of presidents for each of the Mizzou Alumni Association geographic alumni chapters. To visit the chapter website or contact a president visit Mizzou.com and click on “Groups,” and then choose the “Alumni Chapter Locator.”

South Louisiana Alumni Chapter | Kathy Baker
Southeast Missouri Black & Gold Chapter | Larry Simon
Southern Arizona Tigers Chapter | Ron Pemstein
Southwest Florida Alumni Chapter | Jason Philips
Southwest Missouri Alumni Chapter | Rachel Greene
St. Louis Alumni Chapter | Elizabeth Gaines
Sullivan County Chapter | Jeremy Mosley
Tampa Bay Tigers Chapter | Katie Heckert
Tidewater Tigers Alumni Chapter | Craig Moeller
Tigers of the Corn Chapter | James W. Simmons
Tornado Alley Tigers-Wichita KS | Mitch Adams
Tulsa Alumni Chapter | Jon Lawrence
Twin Cities Chapter | Cary Reed Weatherby
Valley of the Sun Alumni Chapter | Amy Grimes
Washington D.C. Chapter | Heather Starek
Webster County Alumni Chapter | Jay Dade
Spokane/Northern Idaho | Laura Skaer
Madison, WI | Christian Badger and Brett Blomme
Greenville/Spartanburg, SC | Guy Furay
Columbia, SC | Lex Ames
Hilton Head, SC | Roger Clark
Honolulu, HI | Morgan Hawley and Alicia Swartz
Cincinnati | Sean Hannum
Great River (Hannibal/Quincy) | Jerry Schoenborn
Miami | Tony Garrett
Parkland Area Tigers | Pat King
Tigers of the Lake | John Shelby
Triangle Tigers (Raleigh/Durham) | Melissa Everitt
Triad Mizzou Alumni (Greensboro/Winston-Salem) | Lauren Bolinger
Western North Carolina | Lauren Schatz

Mizzou Near You: Central Advancement

Vice Chancellor for Advancement

Tom Hiles, Vice Chancellor

301 Reynolds Alumni Center
Phone: (877) 738-6108
Fax: 573-884-5144

Advancement Records

Management

(Biographical Records & Gift Processing)

S. Diane Bartley, Director of Gift Compliance/Auditor

Penny Blank, Office Manager

407 Reynolds Alumni Center
Phone: 573-884-7709
Email: GiftProcessing@missouri.edu

Advancement Creative Services

Catey Terry, Executive Director

306 Reynolds Alumni Center
Phone: 573-882-6511
Fax: 573-882-5144

Corporate & Foundation Relations

Sherry Wilson, Executive Director

306 Reynolds Alumni Center
Phone: (888) 527-6881
Fax: 573-884-5144

Donor Relations

Carin Huffman Grinch, Director

306 Reynolds Alumni Center
Phone: (877) 738-4546
Fax: 573-884-5144
Email: donorrelations@missouri.edu

Gift Planning & Endowments

Suzanne Flanegin, Executive Director

302 Reynolds Alumni Center
Phone: (800) 970-9977
Fax: 573-884-5144
Email: giftplanning@missouri.edu

Organizational &

Professional Development

Deb Snellen, Director

407 Reynolds Alumni Center
Phone: 573-884-6689
Fax: 573-884-5144

Regional Programs

Kevin Heyen, Executive Director

302 Reynolds Alumni Center
Phone: (866) 738-8447
Fax: 573-882-4542

Mizzou Near You: Units, Schools, & Colleges

College of Agriculture, Food and Natural Resources

Thomas Payne, Vice Chancellor and Dean

2-69 Agriculture Building
573-882-3752

Darcy Wells, Executive Director of Advancement

2-4 Agriculture Building
Phone: 573-882-7009
Fax: 573-884-8174
Email: givingtocafnr@missouri.edu

College of Arts & Science

Michael O'Brien, Dean

317 Lowry Hall
573-882-4421

Tim Hausman, Executive Director of Advancement

110 Lowry Hall
Phone: 573-882-4409
Fax: 573-884-1695
Email: advanceas@missouri.edu

Chancellor's Fund for Excellence

Gena Scott, Director of Advancement

109 Reynolds Alumni Center
Phone: 573-882-6371
Fax: 573-884-5144

College of Education

Daniel Clay, Joann H. Hook Dean's Chair in Educational Renewal

118 Hill Hall
573-882-8524

Vacant, Director of Advancement

114 Hill Hall
Phone: 573-882-5111
Fax: 573-884-0559
Email: CoEDevelopment@missouri.edu

College of Engineering

Elizabeth Loba, Dean

W1025 Lafferre Hall
573-882-4375

Ann Baker, Executive Director of Advancement

W1006 Thomas & Nell Lafferre Hall
Phone: 573-882-2099
Fax: 573-884-4948

Trulaske College of Business

Stephen Farris, Interim Robert J. Trulaske, Sr. Deanship

407 Cornell Hall
573-882-6688

Jeremy Diener, Executive Director of Advancement

408 Cornell
Phone: 573-882-6768
Fax: 573-884-1675

Graduate Studies

Leona Rubin, Associate Vice Chancellor for Graduate Studies and Associate Vice President for Academic Affairs and Graduate Education

210 Jesse Hall
Phone: 573-884-1402

Mark Thomas, Senior Director of Advancement

210 Jesse Hall
Phone: 573-884-1402
Fax: 573-884-5454

School of Health Professions

Kristofer Hagglund, Dean

510 Lewis Hall
573-884-6705

Matt Osterthun, Director of Advancement

512 Lewis Hall
Phone: 573-882-4209

Mizzou Near You: Units, Schools, & Colleges

College of Human Environmental Science

Sandy Rikoon, Interim Dean

113 Gwynn Hall
573-882-6227

Nancy Schultz, Senior Director of Advancement

122 Gwynn Hall
Phone: 573-884-9081
Fax: 573-884-4807

International Fundraising

Ann Ryan Solomon, Director of Advancement

109 Reynolds Alumni Center
Phone: 573-882-2350
Fax: 573-884-5144

School of Journalism

David Kurpius, Dean

120 Neff Hall
573-882-6686

Colin Kilpatrick, Executive Director of Advancement

103 Neff Hall
Phone: 573-882-0334
Fax: 573-884-2430

School of Law

Gary Myers, Dean

231 Hulston Hall
573-882-3247

Lisa Eimers, Senior Director of Advancement

205 Hulston Hall
Phone: 573-882-4374
Fax: 573-882-4984

MU Libraries

Ann Riley, Interim Director

104 Ellis Library
573-882-9169

Matt Gaunt, Director of Advancement

104 Ellis Library
Phone: 573-882-9168
Fax: 573-882-8044

School of Medicine

Dr. James P. Stannard, Hugh E. and Sarah D. Stephenson Deanship

MA202 Medical Services Building
573-884-9080

Yvonne Miller, Executive Director of Advancement

One Hospital Drive, DC205.00
Columbia, MO 65212
Phone: 573-882-6100
Fax: 573-884-4809

Mizzou Advantage

Roy Hartline, Sr. Director of Advancement

109 Reynolds Alumni Center
Phone: 573-884-5275
Fax: 573-884-5144

Mizzou Annual Giving & Membership

Robyn Kollar, Director of Membership & Annual Giving

152 McReynolds Hall
Phone: (877) 443-8268

Mizzou Athletics

Mack Rhodes, Athletic Director

Mizzou Arena, Suite 200
573-882-2055

Brian White, Senior Associate Athletic Director for Advancement

Mizzou Arena
Phone: 573-884-6428

Mizzou Near You: Units, Schools, & Colleges

Fax: 573-884-1374

MU Extension

Tom Henderson, Interim Vice Provost, Director

108 Whitten Hall
Phone: 573-882-7477

Cat Comley Adams, Director of Advancement

109 Whitten Hall
Phone: 573-882-3407
Fax: 573-882-1955

Sinclair School of Nursing

Judith Fitzgerald Miller, Dean

S215 Sinclair Nursing Building
573-882-0278

Matt Osterthun, Director of Advancement

S219 School of Nursing
Phone: 573-884-3775
Fax: 573-884-4544

Student Affairs

Cathy Scroggs, Vice Chancellor

211 Jesse Hall
573-882-6776

Iris Calloway, Director of Advancement

N17 Memorial Union
Phone: 573-884-3160
Fax: 573-884-0646

Thompson Center for Autism & Neurodevelopmental Disorders

Vacant, Senior Director

205 Portland Street
Phone: 573-884-7263

Truman School of Public Affairs

Barton Wechsler, Dean

101 Middlebush Hall
573-884-1656

Janie Ausburn Harmon, Senior Director of Advancement

113 Middlebush
Phone: 573-882-3304
Fax: 573-884-4872

University Healthcare

Mitch Wasden, Chief Executive & Operating Officer

5 Hospital Drive
DC031.00 Executive Administration
573-884-8738

Vacant, Executive Director of Advancement

DC066.00
One Hospital Drive
Phone: 573-882-0488
Fax: 573-884-4246

University Scholarships

Gena Scott, Director of Advancement

109 Reynolds Alumni Center
Phone: 573-882-4704
Fax: 573-884-5144

College of Veterinary Medicine

Neil Olson, Dean

W203 Vet Med Complex
573-882-3768

Vacant, Executive Director of Advancement

W205 Vet Med Building
Phone: 573-882-0548
Fax: 573-884-9092

University of Missouri Regional Programs



Andrea Cathey
 Director of Advancement
 573-882-2771
 catheya@missouri.edu
Travels to: Los Angeles, Orange County, San Diego, San Francisco Bay Area, Seattle, Tacoma, Vancouver, BC, Las Vegas, Reno, Tahoe, Sacramento, Palm Springs

Drew Elmore
 Director of Advancement
 573-884-3178
 elmoreal@missouri.edu
Travels to: Los Angeles, Orange County, San Diego, San Francisco Bay Area, Oregon, Colorado, Kansas

Kate Gunn
 Director of Advancement
 573-882-7760
 gunnk@missouri.edu
Travels to: Washington D.C., Atlanta, South Florida, Miami, Ft. Lauderdale, Boston, Connecticut, New York State, New York City, Springfield

Megan Ogar
 Advancement Officer
 573-882-3276
 ogarm@missouri.edu
Travels to: Washington D.C., Maryland, North Carolina, South Carolina, Northern Ohio, Indiana, Michigan, Pennsylvania, New Jersey, New York City, Tampa, Orlando, Central Florida

Jarrett Sutton
 Advancement Officer
 573-882-2650
 suttonjt@missouri.edu
Travels to: New York City, DC Metro, Virginia, Kentucky, Tennessee, Southern Ohio, Cincinnati, Northern Florida, Gainesville, Alabama, Mississippi

Kevin Heyen
 Executive Director of Advancement
 573-884-6538
 heyenk@missouri.edu
Travels to: Chicago, Phoenix/Tucson, Dallas, Houston, New Orleans

Jonathan Shelby
 Advancement Officer
 573-882-1795
 shelbyjh@missouri.edu
Travels to: Dallas, San Antonio, Austin, West Texas, Chicago, Outstate Illinois, Minneapolis, St. Paul, Omaha, Lincoln, Des Moines

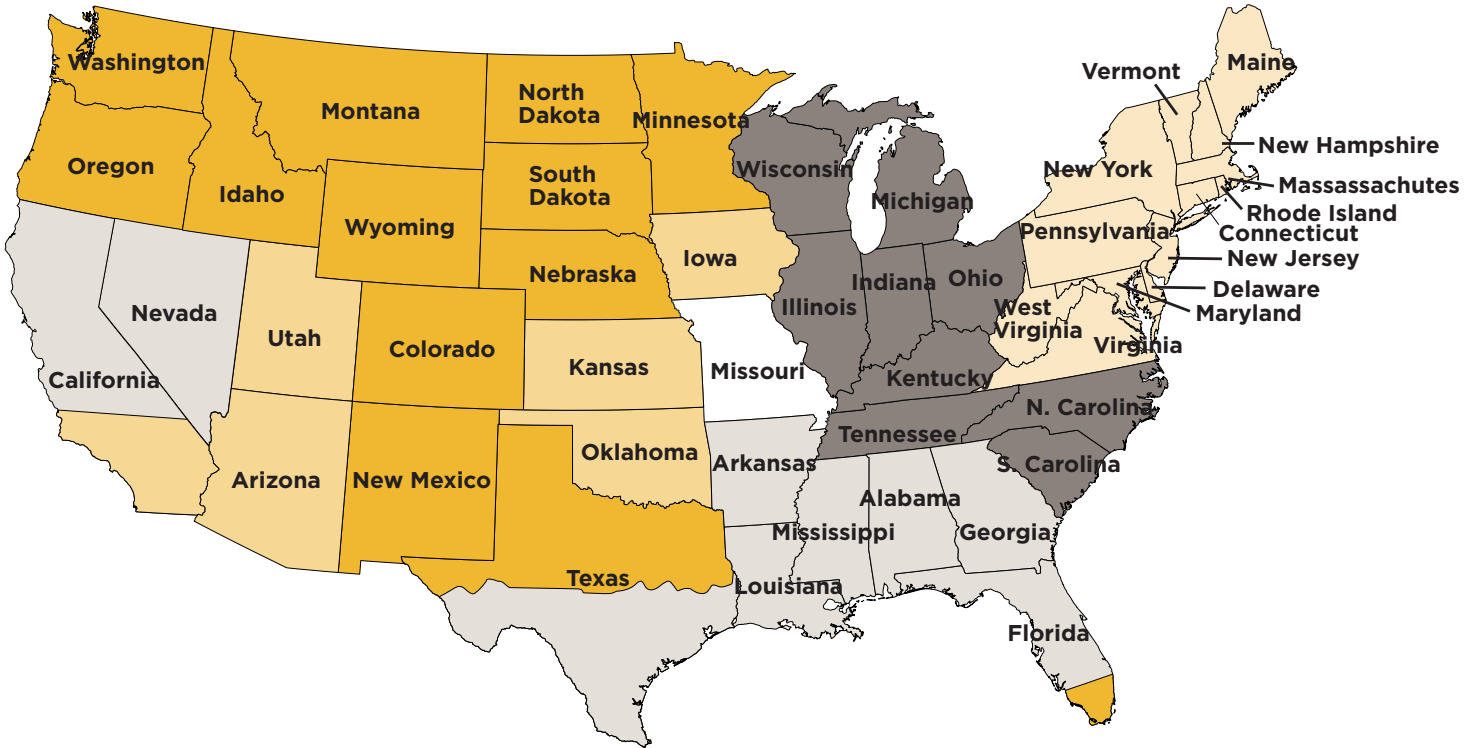
Bruce Broce
 Director of Development - Kansas City
 913-439-9842
 brocer@missouri.edu

Vacant Position
 Director of Development - St. Louis

Office of Gift Planning & Endowments

302 Reynolds Alumni Center | Columbia, MO 65211

573-882-0272 | 800-970-9977



Barbara Hasselriis
Senior Director of Advancement
573-882-3898
hasselriisb@missouri.edu
Health Professions, Hospitals, Medicine, Nursing

James Preston
Senior Director of Advancement
573-884-3419
prestonjo@missouri.edu
Chancellor's Fund, Extension,
Human Environmental Sciences, Journalism

Suzanne Flanegin
Executive Director for Advancement
573-884-7702
flanegins@missouri.edu
Business, Graduate School, Honors College, Law,
University Scholarships

Bill Shiflett
Senior Director of Advancement
573-884-7997
shiflettw@missouri.edu
Arts & Science, Athletics,
College of Agriculture, Food & Natural Resources,
Student Affairs, Veterinary Medicine

Ellen McLain
Senior Director of Advancement
573-882-1830
mclaine@missouri.edu
Botanic Gardens, Education, Engineering, Libraries



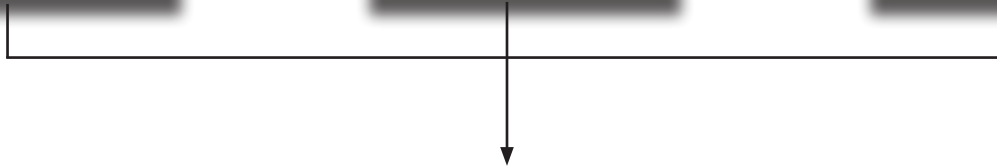
Catherine Allen
BS HES '68, LHD '05
Tri-Chair



José Gutiérrez
BS Acc '84, M Acc '85
Tri-Chair



Richard Miller
BA '70, LittD '00
Tri-Chair



Campaign Cabinet

Campaign Cabinet Staff Liason: Tom Hiles, Vice Chancellor for Advancement

(continued on next page)

Campaign Cabinet Members



Tom Atkins
BS BA '59



Stuart Bascomb
MA '65



Titus Blackmon
M Ed '88



John Bies
PhD '72



Michael J. Brown
BS EE '79



Dr. Michael Bukstein
MD '70



Ann
King Dickinson
BS Ed '66



Cottrell Fox
BJ '71



Sam Hamacher
BS BA '74



Ralph Hill
BS BA '81



Elizabeth "Beth"
Knisley
BJ '71



Kent Kreh
BA '57, LHD '98



Thomas Lafferre
BS ME '56



Valerie Lawlor
BA '89



Davida Layer
BSN '85



William Little
BS BA '64



Mark McAndrew
BS BA '75



Larry McMullen
BA '53, JD '59



Michael E. Melton
BS EE '81, JD '84



Susan Mihalevich
BSN '68

Campaign Cabinet Members



David Miles
BS '94



Dr. Lowell D. Miller
BS Ag '57, MS '58,
PhD '60



Pamela Oberdiek
Bus. '84



Jim Pace
BS BA '65



Steve Richardson
BS BA '77



Howard "HC"
Russell, Jr.
BS Ag '79



Michael Sachs
BA '74, MS '78



Denny Shelton
MS '77



Jane Shelton
BS BA '79



Jeanne Sinuefield,
PhD



Steve Smith, PhD



Hugh E.
Stephenson III
BA '90



Rhonda Thomas
JD '73



Don Thompson
BS BA '77



Steve Trulaske



Mark Wilkins
BA '90



Ron Wood
BS EE '64

Jefferson Club Board of Trustees



Naomi Cupp,
Chair



John Anderson,
BJ '87, Vice Chair



H. Doug Adams
MPA '82



Sandra Doolin
Aust
BSN '65



Chuck Banta
BSF '77



Susan Bierman
BJ '61



Titus Blackmon
M Ed '88



Loren Broaddus
MD '60



Ken Cage
JD '71



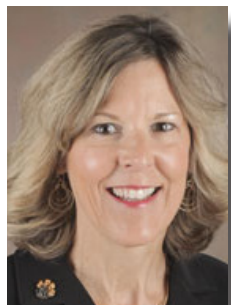
Torri Corcoaran
BA '73



Barbara Downey
BA '74, MS '76,
PhD '89



Jim Liu
BS '73, MS '75,
PhD '81



Tracey Mershon
BJ '85



Rick Pennell
BA '75



Melodie Annee
Powell
BA '77, JD '81

Jefferson Club Board of Trustees



John Raines
BS Ag '88



Dewey Schade
BJ '64



Jolene Schulz
BS Ed '63, M Ed '73



Stan Sides
MD '68



Russell G. Smith II
BJ '67, MA '71



Barbara
Stampfli-Savill



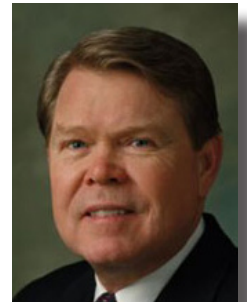
Sonja Steptoe
BA '82, BJ '82



Carolyn Thomas
BA '81



Cindy Thompson
BS HE '81



Ron Wood
BS EE '64

Jefferson Club Staff Liasion: Carin Huffman Grinch, Director of Donor Relations

Mizzou Alumni Association Governing Board



Sherri Gallick
President
BS Ed '82



Ted Ayres
President-Elect
JD '72



Bruce McKinney
Vice President
BS BA '74



Todd McCubbin
Secretary/MAA
Executive Director
M Ed '95



Andrea
Allison-Putman
Treasurer
BS BA '85



Dudley McCarter
Immediate
Past President
JD '75



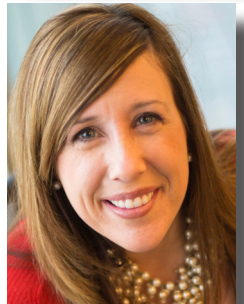
William Fialka
BS BA '78



Alex Hopkins
BA '97, M Ed '12



Gary Thompson
BS '82



Julie Gates
BS Ed '99



Lesa McCartney
BSN '77, MS '97



Robin Wenneker
BS BA '91



Mica Ward
BJ '91



Mitch Hardin
BJ '82



Steve Hays
BS BA '80

Mizzou Alumni Association Governing Board



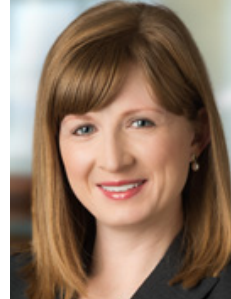
Patty Wolfe
BA '77, BS Ed '77
MBA '80



Lisa Plummer
Stoppenbach
BS '82



Albert Kennett
BS '66, MS '68



Alexia Norris
BA '03, JD '06



Mark Bauer
MBA '69



Nathan Marcus
BS BA '82



TBA



Maddie Murphy,
Student
Representative

Advancement Advisory Boards

CENTRAL ADVANCEMENT

CHANCELLOR'S ADVISORY COMMITTEE

Alan Atterbury | Naples, FL
Peggy Cherng | Las Vegas, NV
Irl Engelhardt | St. Louis, MO
Lynne Greene | New York, NY
Richard Kinder | Houston, TX
Chih-Hsiang Lin | Sugar Land, TX
William Morgan | Houston, TX
William Thompson, Jr. | Irvine, CA
Don O. Walsworth, Sr. | Marceline, MO

CHANCELLOR'S FUND FOR EXCELLENCE

John Austin | Olathe, KS
Anthony Casarona | Scottsdale, AZ
Clay Cox | Bloomington, IL
Patrick Cox | Bloomington, IL
Janet Crosby | Columbia, MO
Jay Dade | Rogersville, MO
Donald Flora | Kansas City, MO
Christy Gans | St. Louis, MO
Greenwood Village, CO
Patricia Hunt | Mount Vernon, NY
John Jostrand | Chicago, IL
Jon Knouse | Glencoe, IL
Gregory Lashley | Apopka, FL
Gayle Lashley | Apopka, FL
John Lichtenegger | Plano, TX
Willard McCarter | Creve Coeur, MO
Larry McMullen | Shawnee Mission, KS
David Miles | Smithville, MO
Melanie Montgomery Hill | Tulsa, OK
Louise Morgenstern | Santa Monica, CA
Richard Wallace | Columbia, MO
Barbara Ware | St. Louis, MO
David Ware | St. Louis, MO

FRIENDS OF THE GARDENS ADVISORY BOARD

Linda Atkins | Columbia, MO
Kristy Bryant | Columbia, MO
Terri Gray | Columbia, MO
Carol Grove | Columbia, MO
Susan Heinsz | Columbia, MO
Robin Kennedy | Columbia, MO
Mary Kroening | Columbia, MO
Larry McMullen | Shawnee Mission, KS

Marjorie Motley | Centralia, MO
Cindy Mustard | Columbia, MO
Donna Puleo | Columbia, MO
Cheryl Rosenfeld | Columbia, MO
Barbara Rothenberger | Columbia, MO
Bill Ruppert | Kirkwood, MO
Christopher Starbuck | Columbia, MO

MIZZOU WOMEN GIVE ADVISORY COMMITTEE

Rachel Anderson | Springfield, MO
Nancy Bedan | Columbia, MO
Iris Calloway | Columbia, MO
Susan Combs | Astoria, NY
Anne Deaton | Columbia, MO
Suzanne Engelhardt | St. Louis, MO
Jill Ferguson | Columbia, MO
Suzanne Flanegin | Columbia, MO
Elizabeth Haden | Kansas City, MO
Margaret Holt | Chicago, IL
Carin Huffman Grinch | Columbia, MO
Darlene Johnson | Columbia, MO
Deborah Jones | Kansas City, MO
Sheryl Jones-Zahorsky | Kansas City, MO
Valerie Lawlor | Dallas, TX
Karin Loftin | Columbia, MO
Sharon Lynch | Columbia, MO
Gail McCarty | Omaha, NE
Kathryn McFarland | Lake Forest, IL
Ellen McLain | Jefferson City, MO
Julie Middleton | Columbia, MO
Dianne Orton | Columbia, MO
Marjorie Sable | Columbia, MO
Ann Ryan Solomon | Columbia, MO
Deborah Starke | Lee's Summit, MO
Catherine Terry | Columbia, MO
Rhonda Thomas | Chicago, IL
Janice Whitlow | Kansas City, MO

PLANNED GIVING ADVISORY COMMITTEE

Robert Almony | Columbia, MO
Jo Behymer | Columbia, MO
Caroline Davis | Columbia, MO
Sandy Diamond | St. Louis, MO
Martha Fortner | Lee's Summit, MO
Roy Fortner | Lee's Summit, MO
Marcia Healy | Houston, TX
Robert Healy | Houston, TX
Aaron Jones | Springfield, MO
Marilou Nash | Elizabethtown, KY

William Nash | Elizabethtown, KY
Walter Potter | Falls Church, VA
Edwin Turner | Chillicothe, MO
Brenda West | Blue Springs, MO

RESEARCH AND DEVELOPMENT ADVISORY BOARD

Catherine Allen | Santa Fe, NM
Connie Armentrout | Columbia, MO
Robert Atcher | Los Alamos, NM
Bob Basore | Hazelwood, MO
Elizabeth Bax | Jefferson City, MO
J. Mark Beverley | Columbia, MO
Beth Bosley | Valencia, PA
Brett Bosley | Valencia, PA
Cynthia Brinkley | St. Louis, MO
Mike Brooks | Columbia, MO
John Bucksath | Columbia, MO
Stanley Bull | Golden, CO
Josh Campbell | Jefferson City, MO
Wayne Carter | Kansas City, MO
Robert Casillas | Kansas City, MO
Carroll Casteel | St. Louis, MO
Jerry Caulder | Rancho Santa Fe, CA
Howard Choe | Plano, TX
Mark Connelly | Norwalk, CT
Philip Cullom | Washington, DC
Jay DeLong | St. Louis, MO
Joseph Driskill | Jefferson City, MO
John Dupuy | Columbia, MO
Linda Eatherton | Park Ridge, IL
Stephen Ellebracht | Midland, MI
Stephen Erdel | Columbia, MO
Dean Franklin | Sunset Hills, MO
Eugene Gerke | Columbia, MO
James Gilkerson | Stillwater, MN
Kelly Gillespie | Jefferson City, MO
Gordon Goodarzi | Redondo Beach, CA
John Gordon | Columbia, MO
Frederick Hausheer | San Antonio, TX
James Heeter | Kansas City, MO
Lucas Heim | Columbia, MO
Robert Hesskamp | Decatur, GA
Irl Hirsch | Bellevue, WA
James Hoffmeister | St. Louis, MO
Bonnie Kargel | Chisago City, MN
David Keller | Columbia, MO
Phillip Kerr | Chesterfield, MO
William Kircher | Kansas City, MO
Duke Leahey | Ellisville, MO

(CONTINUED ON NEXT PAGE)

Advancement Advisory Boards

Rebecca Lim | Atlanta, GA
James Liu | La Canada Flintridge, CA
Thomas Mehlhorn | Alexandria, VA
Thomas Melzer | St. Louis, MO
Robert Morff | Raleigh, NC
Spurgeon Norman | Bella Vista, AR
James O'Neill | St. Louis, MO
Jeffrey Organ | New Braunfels, TX
Fred Parks | Tucson, AZ
Henry Plain | Menlo Park, CA
Patricia Robb | Naperville, IL
David Ross | Kansas City, MO
Michael Sachs | Winnetka, IL
Martin Sanders | Hillsborough, CA
Nancy Sauer | Los Alamos, NM
Sheri Smithey | Grubville, MO
Kevin Sweeney | Kansas City, MO
Richard Turpin | San Diego, CA
William Vanjonack | Columbus, NJ
Ronald Wood | Belton, MO

COLLEGE OF ARTS AND SCIENCES

COLLEGE OF ARTS & SCIENCE DEAN'S STRATEGIC DEVELOPMENT BOARD

Anna Aydt-Doyle | St. Louis, MO
Dennis E. Barnes, Jr. | Chesterfield, MO
Jack Bastable | Leawood, KS
Richard S. Bishop, Ph.D. | Houston, TX
Randy Canent | Chicago, IL
Tyrone J. Christian | Orlando, FL
Stephen M. Clampett | Farmers Branch, TX
James E. Cooling | Kansas City, MO
Torri Corcoran | Houston, TX
Douglas M. Dixon, J.D. | Leawood, KS
A. Cooper Drury | Columbia, MO
Marlin F. Fiola | Kansas City, MO
Christopher Fuldner | Monett, MO
Linda M. Godwin, Ph.D. | Columbia, MO
M. Leslie Griffin | Prairie Village, KS
James F. Hoffmeister | St. Louis, MO
Kent Q. Kreh | Creve Coeur, MO
Sally Schoeninger Kriegel | St. Louis, MO
Andrew Limbaugh | St. Louis, MO
David Mandy | Columbia, MO
Neal A. Matticks | New York, NY
Michael K. McClaskey | Castle Pines, CO
Richard G. Miller | Columbia, MO
Donald L. Packwood | San Jose, CA

Walter L. Pfeffer II | Columbia, MO
Charles H. Rehm, Jr. | Town & Country, MO
Michael W. Reinmund | Pittsburgh, PA
Andrew R. Sackin | New York, NY
John W. Shaw | Leawood, KS
William F. Springer | Naples, FL
Gary A. Tatlow, Esq. | Columbia, MO
John Walker | Columbia, MO
Paul L. Wickens | Kansas City, MO
Mark A. Wilkins | St. Louis, MO
Ed Williamson | Katy, TX
John H. Wilson | Olathe, KS
Albert Winemiller, Jr. | Scottsdale, AZ
Markham L. Zobrist | New Haven, MO

COLLEGE OF AGRICULTURE, FOOD, AND NATURAL RESOURCES

AG ALUMNI ORGANIZATION

Colleen Abbott | Tusculumbia, MO
Betsy Blades | Urbandale, IA
Neal Bredehoeft | Alma, MO
James Brixey | Norwood, MO
Daniel Burkemper | Old Monroe, MO
Shane Cox | Princeton, MO
Gregory Dieckmann | Levasy, MO
Jerry Duff | Smithville, MO
Christina Griffin | Jamestown, MO
Kenneth Grober | Ballwin, MO
Matthew Hardecke | Ballwin, MO
Matthew Horstmeier | O'Fallon, MO
Michael Johanning | Olathe, KS
Neysa Kleinman | Wentworth, MO
Thaddeus Koenigsfeld | Kansas City, MO
Emily Kueker | Lake Ozark, MO
Brock Legan | Macon, MO
Joseph Manning | Clinton, MO
Kristen Marshall | Smithville, MO
Richard Meyer | St. Charles, MO
Earl Niemeyer | Bowling Green, MO
Donald Nikodim | Columbia, MO
Brian Norton | Girard, KS
Thomas Payne | Columbia, MO
Sherri Peters | Holt, MO
Brian Pulliam | Columbia, MO
Dana Rogge | Boonville, MO
Kirk Search | Maryville, MO
Patricia Thomas | Jefferson City, MO
Jerald Weber | Columbia, MO

Alan Wessler | Columbia, MO

AG FOUNDATION BOARD

John Akridge | Columbia, MO
Craig Childs | Centralia, MO
Christine Chinn | Clarence, MO
William Coen | Columbia, MO
Robert Condron | Columbia, MO
Don Copenhaver | Hallsville, MO
Richard Fordyce | Bethany, MO
Bryan Garton | Columbia, MO
James Griffith | Columbia, MO
Jon Hagler | Bonne Terre, MO
Frederick Hannah | St. Joseph, MO
Barry Hart | Jefferson City, MO
Robert Hertzog | Lee's Summit, MO
Peter Hofherr | Columbia, MO
Charles Hurst | Tarkio, MO
William Jackson | Marshall, MO
Dale Ludwig | Linn, MO
Gary Marshall | Jefferson City, MO
Lowell Mohler | Jefferson City, MO
Donald Nikodim | Columbia, MO
Kristin Perry | Bowling Green, MO
James Russell | Jefferson City, MO
John Ruth | Jefferson City, MO
Steven Sapp | Columbia, MO
John Saunders | Osborn, MO
William Stouffer | Marshall, MO
Billy Streeter | Columbia, MO
Steven Taylor | Fulton, MO
Robert Thompson | Rolla, MO
Dawn Thurnau | Ashland, MO
Edwin Turner | Chillicothe, MO
Darcelle Wells | Columbia, MO
Robin Wenneker | Columbia, MO
Alan Wessler | Columbia, MO
Loyd Wilson | Columbia, MO

COLLEGE OF AGRICULTURE, FOOD & NATURAL RESOURCES CAMPAIGN COMMITTEE

Stephen Barr | Sarasota, FL
Susan Barr | St. Louis, MO
Keith Boyer | Burlington, IA
Charles Brazeale | Paris, MO
Douglas Brown | Columbia, MO
Travis Brown | Columbia, MO
Steven Burger | California, MO
Darryl Chatman | St. Louis, MO

(CONTINUED ON NEXT PAGE)

Advancement Advisory Boards

Roger Gardner | Plano, TX
Diana Hallett | Hartsburg, MO
William Jackson | Marshall, MO
Richard Maltsbarger | Mooresville, NC
Lowell Miller | Village of Loch Lloyd, MO
John Raines | Chesterfield, MO
Joseph Roetheli | Liberty, MO
Jerald Weber | Columbia, MO
Robin Wenneker | Columbia, MO

COLLEGE OF AGRICULTURE, FOOD & NATURAL RESOURCES VICE

CHANCELLOR'S LEADERSHIP COUNCIL

Roger Beachy | St. Louis, MO
Brett Begemann | Pacific, MO
Keith Boyer | Burlington, IA
Norman Braksick | Portage, MI
Darryl Chatman | St. Louis, MO
Don Copenhaver | Hallsville, MO
Ann King Dickinson | Kansas City, MO
Sarah Geisert | Minnetonka, MN
William Jackson | Marshall, MO
Alexander Kemper | Kansas City, MO
Charles Kruse | Dexter, MO
Charles Lovelace | Elsberry, MO
James McRoberts | Columbia, MO
Mike Nordwald | Kansas City, MO
Daryl Oldvader | Cape Fair, MO
Kristin Perry | Bowling Green, MO
Peter Raven | St. Louis, MO
Pat Schaumann | St. Louis, MO
Mary Schon | Carroll, IA
John Stober | Columbia, MO
Bettie Yahn-Kramer | St. Charles, MO

SCHOOL OF NATURAL RESOURCES ADVISORY COUNCIL

Lisa Allen | Jefferson City, MO
Richard Baskett | Columbia, MO
Robert Belote | Springfield, MO
Charles Bergfeld | Manchester, MO
Louise Bradshaw | St. Louis, MO
Brian Brookshire | Hartsburg, MO
Roy Brundage | Columbia, MO
Jerry Calvin | Joplin, MO
Brian Canaday | Columbia, MO
Glenn Chambers | Columbia, MO
Larry Cleveland | Stoutland, MO
David Curtis | Warrensburg, MO
Deretha Darrow | Columbia, MO

Joe Dillard | Columbia, MO
Michael Dougherty | Lenexa, KS
Thomas Draper | Columbia, MO
Kenneth Edscorn | St. Louis, MO
Douglas Eiken | Jefferson City, MO
Bruce Entwistle | Kansas City, MO
Bill Foster | Jefferson City, MO
David Gaede | Springfield, MO
Vincent Gallo | Columbia, MO
Justine Gartner | Jefferson City, MO
Michael Griggs | Columbia, MO
Myron Gwinner | Tulsa, OK
Diana Hallett | Hartsburg, MO
Chuck Harwood | Jefferson City, MO
Michael Hood | West Des Moines, IA
Shelby Jones | Jefferson City, MO
Wyn Kelley | Jefferson City, MO
James Kent | Ballwin, MO
Warren Kincaid | St. Louis, MO
Michael J. Kruse | Jefferson City, MO
Michael S. Kruse | Columbia, MO
Steven Lack | Kansas City, MO
Danny Lang | Lake St. Louis, MO
Clayton Lee | Columbia, MO
William Lockwood | Jefferson City, MO
Charles Lovelace | Elsberry, MO
Colleen Meredith | Jefferson City, MO
Ron Miller | Columbia, MO
Stuart Miller | Columbia, MO
David Murphy | Columbia, MO
Janice Neitzert | Columbia, MO
Sara Pauley | Hartsburg, MO
Robert Perry | Bowling Green, MO
Brian Pettegrew | Kansas City, MO
Jerry Presley | Centertown, MO
William Reininger | St. Louis, MO
Roscoe Righter | Blue Springs, MO
Winifred Runge Stribling | Mexico, MO
Frank Thompson | Columbia, MO
Douglas Tilly | Morrison, MO
Bill Turner | Jefferson City, MO
Larry Vangilder | Columbia, MO
Bruce Vawter | St. Louis, MO
Christopher Vitello | Holts Summit, MO
James Walker | St. Louis, MO
Hugh Welch | St. Joseph, MO
Bettie Yahn-Kramer | St. Charles, MO
Dan Zekor | Columbia, MO
Robert Ziehmer | California, MO

SCHOOL OF NATURAL RESOURCES ALUMNI BOARD

Lisa Allen | Jefferson City, MO
Richard Baskett | Columbia, MO
Robert Belote | Springfield, MO
Charles Bergfeld | Manchester, MO
Louise Bradshaw | St. Louis, MO
Brian Brookshire | Hartsburg, MO
Roy Brundage | Columbia, MO
Jerry Calvin | Joplin, MO
Brian Canaday | Columbia, MO
Glenn Chambers | Columbia, MO
Larry Cleveland | Stoutland, MO
David Curtis | Warrensburg, MO
Deretha Darrow | Columbia, MO
Joe Dillard | Columbia, MO
Michael Dougherty | Lenexa, KS
Thomas Draper | Columbia, MO
Kenneth Edscorn | St. Louis, MO
Douglas Eiken | Jefferson City, MO
Bruce Entwistle | Kansas City, MO
Bill Foster | Jefferson City, MO
David Gaede | Springfield, MO
Vincent Gallo | Columbia, MO
Justine Gartner | Jefferson City, MO
Michael Griggs | Columbia, MO
Myron Gwinner | Tulsa, OK
Diana Hallett | Hartsburg, MO
Chuck Harwood | Jefferson City, MO
Michael Hood | West Des Moines, IA
Shelby Jones | Jefferson City, MO
Wyn Kelley | Jefferson City, MO
James Kent | Ballwin, MO
Warren Kincaid | St. Louis, MO
Michael J. Kruse | Jefferson City, MO
Michael S. Kruse | Columbia, MO
Steven Lack | Kansas City, MO
Danny Lang | Lake St. Louis, MO
Clayton Lee | Columbia, MO
William Lockwood | Jefferson City, MO
Charles Lovelace | Elsberry, MO
Colleen Meredith | Jefferson City, MO
Ron Miller | Columbia, MO
Stuart Miller | Columbia, MO
David Murphy | Columbia, MO
Janice Neitzert | Columbia, MO
Sara Pauley | Hartsburg, MO
Robert Perry | Bowling Green, MO
Brian Pettegrew | Kansas City, MO
Jerry Presley | Centertown, MO

(CONTINUED ON NEXT PAGE)

Advancement Advisory Boards

William Reininger | St. Louis, MO
Roscoe Righter | Blue Springs, MO
Winifred Runge Stribling | Mexico, MO
Frank Thompson | Columbia, MO
Douglas Tilly | Morrison, MO
Bill Turner | Jefferson City, MO
Larry Vangilder | Columbia, MO
Bruce Vawter | St. Louis, MO
Christopher Vitello | Holts Summit, MO
James Walker | St. Louis, MO
Hugh Welch | St. Joseph, MO
Bettie Yahn-Kramer | St. Charles, MO
Dan Zekor | Columbia, MO
Robert Ziehmer | California, MO

TRULASKE COLLEGE OF BUSINESS

TRULASKE COLLEGE OF BUSINESS DEAN'S STRATEGIC DEVELOPMENT BOARD

Ronald Ashworth | Chesterfield, MO
Malcolm Aslin | Shawnee Mission, KS
Stuart Bascomb | Isle of Palms, SC
Cynthia Brinkley | St. Louis, MO
Mark Burkhart | St. Louis, MO
Jack Bush | Dallas, TX
Gerald Carlson | Washington, DC
Harry Cornell | Carthage, MO
Kathleen Dolan | Columbia, MO
Robert Ehrhart | Riverside, CT
Harvey Eisen | Greenwich, CT
Matthew Flanigan | Carthage, MO
Leslie Flegel | St. Louis, MO
Mark Foster | Kansas City, MO
Phillip Garrison | Whitefish, MT
Steve Gill | Wayzata, MN
Jose Gutierrez | Dallas, TX
Samuel Hamacher | Chesterfield, MO
Wendy Henry | St. Louis, MO
David Herzog | St. Albans, MO
Ralph Hill | Tulsa, OK
David Johnson | Kansas City, MO
Glenda Kemple | Dallas, TX
Josh Kroenke | Denver, CO
William Little | Columbia, MO
Gerardo Lopez | Charlotte, NC
Greg Maday | Mission Hills, KS
Otto Maly | Columbia, MO
Detelina Marinova | Columbia, MO
Mary Marrs | Ashland, MO

John Miller | St. Louis, MO
Michael Owens | St. Louis, MO
Scott Picker | Leawood, KS
Edward Rapp | Peoria, IL
Dan Schuppan | Columbia, MO
Woodrow Simmons | Tallahassee, FL
Chad Smith | Glencoe, IL
Jean McKenzie | Madison, WI
Jeffrey Smith | Columbia, MO
Steven Trulaske | O'Fallon, MO
Roger Vasey | Naples, FL
Don Walsworth | Marceline, MO
James White | Pleasanton, CA
Lee Wielansky | St. Louis, MO

TRULASKE COLLEGE OF BUSINESS SMITH INSTITUTE OF REAL ESTATE ADVISORY BOARD

Virginia Bryant | San Leandro, CA
John Diehl | St. Louis, MO
Jerry Fogel | Kansas City, MO
Jennifer Gundlach | St. Louis, MO
Daniel Jensen | Leawood, KS
William Linnenbringer | St. Louis, MO
Otto Maly | Columbia, MO
Lawrence Mandel | Ann Arbor, MI
Edward Mansur | Chicago, IL
Brian McAuliffe | Northbrook, IL
Nanci Napoli | Bridgeton, MO
Scott Picker | Leawood, KS
Joshua Rogers | Phoenix, AZ
Monica Swoboda | Columbia, MO
Brian Ungles | Ballwin, MO

TRULASKE COLLEGE OF BUSINESS RECENT ALUMNI ADVISORY BOARD

Peter Beard | Columbia, MO
Andrew Butler | Kansas City, MO
Brittany Cage | St. Louis, MO
Benjamin Carrier | Kansas City, MO
Katie Carrier | Kansas City, MO
Kristin Carter | Springfield, MO
Nathan Carter | Springfield, MO
Cole Donelson | Kansas City, MO
Nathaniel Duker | Columbia, MO
Laura Eisenbeis | Kansas City, MO
Thomas Fritts | Overland Park, KS
Logan Haines | Kansas City, MO
Sarah Kiehl | Clayton, MO
Robert Liebherr | St. Louis, MO
Christine Mathews | Dallas, TX

Nathan Matt | St. Charles, MO
Stephanie Matt | St. Charles, MO
Brianna Moss | Westwood, KS
Sophia Mullineaux | St. Louis, MO
Theresa Mullineaux | St. Louis, MO
Justin Nagel | St. Charles, MO
Julia Niehaus | Hoboken, NJ
John Poeschl | St. Louis, MO
Ryan Rossiter | Kansas City, MO
Kathryn Schmidt | Chesterfield, MO
Benjamin Seidel | Lees Summit, MO
Caitlin Seidel | Lees Summit, MO
Andrea Shaw | Kansas City, MO
Alyson Thompson | Kansas City, MO

TRULASKE COLLEGE OF BUSINESS - VASEY ACADEMY BOARD

Melissa Amaya-Colorado | Kansas City, KS
Brittany Cage | St. Louis, MO
Brennan Duvall | Bridgeton, MO
Darren Ervin | Lake St. Louis, MO
Branden Gregory | St. Louis, MO
Camila Gumati | Columbia, MO
Rashel Hughley | Grandview, MO
Michael Martinez | Dallas, TX
Joseph Mehari | Jefferson City, MO
Natasha Mistry | O'Fallon, MO
Demetrius Moore | Bentonville, AR
Kari Morris | Houston, TX
Shahzad Qalbani | New York, NY
Orvil Savery | St. Louis, MO
Leonard Smith | Columbia, MO

COLLEGE OF EDUCATION

COLLEGE OF EDUCATION ADVANCEMENT BOARD

Ruby Behymer | Columbia, MO
Gregory Boehne | Springfield, MO
Ludmila Dickeson | Estes Park, CO
Sandra Gault | Lawrence, KS
Veralee Hardin | Columbia, MO
W. Jennings | Ladue, MO
Darlene Johnson | Columbia, MO
Jolene Schulz | Columbia, MO
Russ Sloan | Leesburg, FL
Gary Smith | Columbia, MO
Mary Jane Smith | Bradenton, FL
Steve Smith | Bradenton, FL
Karen Weaver | Columbia, MO
Margaret Weber | Camdenton, MO

(CONTINUED ON NEXT PAGE)

Advancement Advisory Boards

COLLEGE OF EDUCATION

ALUMNI ORGANIZATION

Terry Allee | Greenwood, MO
Rusty Black | Chillicothe, MO
Charles Brown | St. Louis, MO
Shirley Brown | St. Louis, MO
Jacqueline Coleman | Jefferson City, MO
Patricia Corum | St. Louis, MO
Kellye Crockett | Kansas City, MO
Norman Gysbers | Columbia, MO
Gayle Hennessey | Joplin, MO
Michael Hodge | St. Charles, MO
Linda Kaiser | Kansas City, MO
Marla Karr | Independence, MO
Anthony King | Kansas City, MO
Andrew Loiterstein | St. Louis, MO
Brian Lynn | Maryville, MO
Lynne Midyett | Chesterfield, MO
Shelly Sanders | Kansas City, MO
Jolene Schulz | Columbia, MO
Kara Schumacher | Independence, MO
Patricia Schumacher | Independence, MO
Sarah Spence | Columbia, MO
Christine Templeton | Kimberling City, MO
Connie Werkmeister | Troy, MO

COLLEGE OF ENGINEERING

ENGINEERING DEAN'S ADVISORY COMMITTEE

Paul Aegerter | Kingwood, TX
Ronald Affolter | Columbia, MO
Donald Baker | Columbia, MO
Gerald Bankus | Niceville, FL
Glen Barton | Peoria, IL
James Beasley | Tulsa, OK
Raymond Beck | Columbia, MO
Richard Beck | Leawood, KS
Derr Bergenthal | Lone Tree, CO
Robert Bloss | Village of Loch Lloyd, MO
Thomas Bodine | St. Louis, MO
Anthony Bonderer | Fulton, MO
Timothy Boyle | St. Louis, MO
John Brown | Kansas City, MO
William Brown | Baton Rouge, LA
Robert Buescher | Massapequa, NY
Stanley Bull | Golden, CO
Mary Carlson | Austin, TX
David Casey | Shawnee Mission, KS
Ward Chambers | Treynor, IA

Leslie Christianson | Champaign, IL
Luther Cooper | Lake St. Louis, MO
Thomas Davis | Kansas City, MO
Thomas Decker | Aldie, VA
Joseph Driskill | Jefferson City, MO
Josephine Emerick | Chesterfield, MO
David Engelkemeyer | Hull, MA
M. Farukhi | Willoughby Hills, OH
Paul Fernandez | Woodstock, GA
James Fischer | Columbia, MO
Donald Flora | Kansas City, MO
Eric Fogle | Ashland, MO
Larry Frevert | Kansas City, MO
Albert Garcia | Georgetown, TX
Leonard Graham | Kansas City, MO
James Grant | Arlington, VA
Clifford Greenwalt | Springfield, IL
William Gregg | Superior, CO
Gary Grissum | Fort Worth, TX
David Haffner | Carthage, MO
Jake Halliday | Columbia, MO
Gerard Harms | Eldon, MO
William Hayes | St. Charles, MO
Robert Healy | Houston, TX
Philip Henry | Greenwood, SC
Joseph Hogan | Tempe, AZ
Harold Holigan | Dallas, TX
David Hollabaugh | Fulton, MO
Ronald Hollrah | Dillon, CO
Robert Holtsmith | Edmond, OK
Ira Hubbell | Columbia, MO
Henry Hungerbeeler | Leavenworth, KS
Joel Jones | Falls Village, CT
Ronald Kadane | Bonita Springs, FL
William Kircher | Kansas City, MO
Randall Knipp | Kansas City, MO
Raymond Kowalik | Lee's Summit, MO
Magne Kristiansen | Lubbock, TX
Jeff Krull | Fenton, MO
Lee Kupfer | Cleveland, MO
Thomas Lafferre | Franklin, TN
Randall Ledford | St. Louis, MO
David Lillard | Prairie Village, KS
Clarence Mabin | Overland Park, KS
Luke Manier | Maryland Heights, MO

Lewis Maye | Norfolk, VA
Philip McCluskey | Plainfield, IL
John McEwen | Larkspur, CO
Jennifer Mehnert | Olathe, KS
Paul Meyer | Evans, GA

Robert Monsees | Columbia, MO
Gary Motchan | Chesterfield, MO
Michael Nichols | Columbia, MO
Susan Pasternack | Gilbert, AZ
Louis Pisani | Overland Park, KS
David Poe | McLean, VA
Robert Polk | Ballwin, MO
Joseph Potts | Punta Gorda, FL
Gary Rainwater | Chesterfield, MO
Martin Rapp | Chesterfield, MO
Bob Ravenstein | Chelmsford, MA
Charles Roeslein | Austin, TX
Devon Rolf | Paola, KS
Randolph Rolf | Vero Beach, FL
George Rootes | Spring, TX
Robert Sandfort | St. Charles, MO
Rosella Schad | Holts Summit, MO
Gregg Scheller | Wildwood, MO
Randall Schilling | St. Charles, MO
Mark Schroder | Greenville, SC
David Scott | Kansas City, MO
Theodore Smith | Springfield, MO
Sheri Smithey | Grubville, MO
Paul Somerville | Houston, TX
Loren Sprouse | Leawood, KS
Lorraine Stipek | Austin, TX
Edward Straub | Olathe, KS
Daniel Strobe | Bixby, OK
Jacqueline Stropes | Ballwin, MO
Terry Sutter | Chester, NJ
Rudolph Telscher | St. Louis, MO
Robert Topping | St. Charles, MO
William Turpin | Columbia, MO
Albert Tyree | San Francisco, CA
Walter Vandelight | Jefferson City, MO
Arthur Wainwright | Wildwood, MO
Ronald Wasson | Lee's Summit, MO
Thomas Westervelt | Kansas City, MO
David Wollersheim | Columbia, MO
Ronald Wood | Belton, MO
Linda Wright | Greenwood, MO
Carolyn Yonley | Ashland, MO
Joseph Ziha | Chesterfield, MO
Raymond Zimmermann | Chesterfield, MO

ENGINEERING RECENT ALUMNI DEVELOPMENT BOARD

Amanda Bagwell | Lee's Summit, MO
Stacy Calabro | Roeland Park, KS
Joseph Carlson | St. Louis, MO

(CONTINUED ON NEXT PAGE)

Advancement Advisory Boards

Angela Culberson | Lawrence, KS
Cody Dailey | Columbia, MO
Rachel Delaney | Jacksonville, FL
Drew Dusenberry | St. Louis, MO
Rebecca Hill | Houston, TX
Katherine Lin | Lee's Summit, MO
Angela Miller | Raytown, MO
Bradley Moll | Jasper, MO
Kristin Murray | Albuquerque, NM
Michael Murray | Albuquerque, NM
Alexandra Newman | Fort Worth, TX
Kate Nolan | St. Louis, MO
Steven Reeves | Theodosia, MO
Nicole Roberts | Broomfield, CO
Suzanne Shands | St. Louis, MO
Chelsea Smith | St. Marys, KS
Lee Stevens | St. Louis, MO
Stephen Stinger | Kansas City, MO
Trenisha Tait | Oklahoma City, OK
Kelly Tepper | Canton, MI
Sarah Tynes | Kansas City, MO
Philip Van Deusen | Lee's Summit, MO
Matthew Wavada | El Dorado, KS
Tiffany Wheeler | Kansas City, MO
Webster White | Columbia, MO
Julie Whitney | St. Louis, MO

INDUSTRIAL & MANUFACTURING SYSTEMS ENGINEERING ADVISORY BOARD

Robert Bloss | Village of Loch Lloyd, MO
Mark Broughton | Fenton, MO
Kai-Wen Cheng | Cedar Falls, IA
John Conte | Carrollton, TX
Richard Covert | Lexington, KY
Wayne Cox | Lacygne, KS
John Crutchfield | St. Louis, MO
Larry David | Columbia, MO
Bryan Davidson | St. Louis, MO
Thomas Davis | Kansas City, MO
Jay Dittmann | Lee's Summit, MO
John Dittmann | Knoxville, TN
John Doering | Myrtle Beach, SC
Donald Flora | Kansas City, MO
Shannon Frost | Shawnee, KS
Jerald Gartman | Morehead City, NC
Russell Greene | Columbia, MO
Jeffrey Haferkamp | St. Louis, MO
David Haffner | Carthage, MO
Patrick Heisinger | Florissant, MO
Adam Hogg | St. Louis, MO

Richard Jauregui | San Antonio, TX
Charles Kauzlarich | Germantown, MD
Saber Mahmood | Dallas, TX
Mary Marrs | Ashland, MO
Beth Martin | Columbia, MO
Justin Myrick | Nashville, TN
Christine Pierson | Lee's Summit, MO
Lee Raney | Tulsa, OK
Katherine Rogers | Arlington, TX
Stephen Sherman | Hixson, TN
Robert Thumser | Ballwin, MO
Henry Wiebe | Rolla, MO
Richard Wilding | Canton, GA
Michael Williamson | Springfield, MO
Philip Wolfe | Sun Lakes, AZ
George Wootten | St. Louis, MO

COLLEGE OF ENGINEERING ALUMNI ORGANIZATION

Donald Baker | Columbia, MO
Rami Bardenstein | Washington, DC
Andrew Bonderer | Fulton, MO
Thomas Childress | St. Louis, MO
Amy Childs | Vandalia, MO
Randy Clarkson | Jefferson City, MO
John Conway | Columbia, MO
Cynthia Cook | Chesterfield, MO
Ray Cook | Chesterfield, MO
Kenneth Cox | Lee's Summit, MO
Shane Creech | Columbia, MO
Carl Crull | Corpus Christi, TX
Sarah Darmitzel | Kansas City, MO
Greggory Dougan | Webster Groves, MO
Chad Ennis | Austin, TX
James Fischer | Columbia, MO
Nicholas Harvey | Columbia, MO
Nick Harvey | St. Louis, MO
Micheal Hetzel | Raytown, MO
Lauren Hopkins | Omaha, NE
Stephen Ihnow | Shawnee Mission, KS
Gretchen Ivy | Kansas City, MO
David Junk | Lenexa, KS
Martin Kehoe | Fulton, MO
Justin Kenagy | Chesterfield, MO
Stacia Kiel | Castle Rock, CO
Gregory Koch | Overland Park, KS
Bradley Kushner | Eudora, KS
Jacquelyn Mattingly | Fenton, MO
Dustin Mongler | Roxana, IL
Shannon Murray | St. Louis, MO
Matthew Oates | Kansas City, MO

Robert Orr | Lee's Summit, MO
Kimberly Pemberton | Lone Jack, MO
Chelsea Pepmiller | St. Charles, MO
Steven Reimer | Saint Louis, MO
Barry Rolle | Kansas City, MO
Myron Rollins | Leawood, KS
Jack Sandridge | St. Charles, MO
Cary Sayre | Marceline, MO
Scott Seddon | St. Louis, MO
Jacqueline Stropes | Ballwin, MO
Deborah Thornburg | Shelbina, MO
Trent Todd | Surfside Beach, TX
James Watt | St. Charles, MO
Tiffany Wheeler | Kansas City, MO

COLLEGE OF HUMAN ENVIRONMENTAL SCIENCES

COLLEGE OF HUMAN ENVIRONMENTAL SCIENCES DEAN'S STRATEGIC LEADERSHIP COUNCIL

Catherine Allen | Santa Fe, NM
Barbara Bloch | Mission Hills, KS
Tootie Burns | Columbia, MO
Sarah Copeland | Hurley, NY
Ann Echelmeier | Columbia, MO
Michele Fish | St. Louis, MO
Linda Greiwe | Springfield, MO
Scott Kellett | Naples, FL
Phillip Kerr | Chesterfield, MO
John Qualy | Clayton, MO
Stanley Remer | Chesapeake, VA

COLLEGE OF HUMAN ENVIRONMENTAL SCIENCES ALUMNI ORGANIZATION

Melissa Alabach | Columbia, MO
Stephanie Anderson | Columbia, MO
Melissa Applegate | Columbia, MO
Martha Boswell | Columbia, MO
Tootie Burns | Columbia, MO
Laura Estes | Columbia, MO
Quanna Hafer | West Plains, MO
Mary Hughes | Auxvasse, MO
Jessica Humble | Columbia, MO
Timothy Lehmann | Columbia, MO
Karen Myers | Columbia, MO
Tia Odom | Columbia, MO
Amy Parris | Columbia, MO
Ellen Rippetto | Columbia, MO

(CONTINUED ON NEXT PAGE)

Advancement Advisory Boards

Suzanne Rothwell | Columbia, MO
Haley Schwarz | Columbia, MO
Amber Sears | Columbia, MO
Leigh Anne Taylor Knight | Lenexa, KS
Elizabeth Townsend Bird | Columbia, MO
Carolyn Wiley | Glenwood, IL

SCHOOL OF SOCIAL WORK ALUMNI BOARD

Tiffany Bowman | Columbia, MO
Cindy Burks | Columbia, MO
Suzanne Cary | Columbia, MO
Lindsay DeGonia | Lake Saint Louis, MO
Kitty Engler | Jefferson City, MO
Cynthia Erwin | Columbia, MO
Rebekah Frees | Hallsville, MO
Emily Love | O'Fallon, IL
Anna Maurer-Batjer | Columbia, MO
Virginia Mohammed | Jefferson City, MO
Lacey Prater | Ashland, MO
Sarah Ronecker | St. Louis, MO
Kimberly Scates | Columbia, MO
Kristi Sveum | Columbia, MO

COLLEGE OF VETERINARY MEDICINE

VETERINARY MEDICINE ALUMNI ORGANIZATION

Gregory Chapman | Columbia, MO
Joan Coates | Columbia, MO
Anthony Dank | Foley, MN
Peggy Fisher | Jackson, MO
William Foxwell | Las Vegas, NV
William Shore | St. Louis, MO

LIBRARIES

LIBRARIES CAMPAIGN COMMITTEE

Elizabeth "Beth" Knisley | Alexandria, VA
Donald Lindberg | Germantown, MD
Kenneth Mares | St. Louis, MO
Richard Wallace | Columbia, MO

MIZZOU ALUMNI ASSOCIATION

MIZZOU ALUMNI ASSOCIATION

PRIDE COUNCIL

Titus Blackmon | Baltimore, MD
Doug Crews | Columbia, MO

Jay Dade | Rogersville, MO
Bob Dixon | Columbia, MO
Doris England | Columbia, IL
Eleanor Frasier | Blue Springs, MO
James Gwinner | Chesterfield, MO
Brock Hessing | Dunlap, IL
Rusty Jandl | Mission Hills, KS
Craig Lalumandier | Weldon Spring, MO
Thomas Lawson | Poplar Bluff, MO
William Lenox | St. Louis, MO
Dale Ludwig | Linn, MO
Dudley McCarter | Creve Coeur, MO
Jack McCausland | Leawood, KS
Jacqueline McEntire Clark | Lee's Summit, MO
Tracey Mershon | Lee's Summit, MO
Mark Miller | Columbia, MO
Richard Moore | Ballwin, MO
John Morris | Jefferson City, MO
Joe Moseley | Columbia, MO
Pamela Oberdiek | Platte City, MO
Barbara Pelot | Columbia, MO
Norris Phillips | Milan, MO
Edward Powell | Springfield, MO
Melodie Powell | Kansas City, MO
Thomas Schultz | Columbia, MO
Deborah Snellen | Columbia, MO
Jean Snider | Harrisonville, MO
Ed Travis | St. Louis, MO
Steven Vincent | Chesterfield, MO
Kimberly Voss | Washington, MO
Carolyn Wiley | Glenwood, IL
Randall Wright | Gainesville, FL

MU EXTENSION

EXTENSION CAMPAIGN ADVISORY COMMITTEE

Patricia Buchanan | Columbia, MO
Thomas Henderson | Columbia, MO
David Potter | Bolckow, MO
Sallie Potter | Bolckow, MO
Howard "HC" Russell, Jr. | Clark, MO
Edwin Turner | Chillicothe, MO
Lois Ann Turner | Chillicothe, MO

MU HEALTH

CHILDREN'S HOSPITAL ADVISORY BOARD

Douglas Abrams | Columbia, MO

Tina Bartels | Columbia, MO
Annamarie Bastida | Columbia, MO
Jay Bryant-Wimp | Columbia, MO
Stacy Bryant-Wimp | Columbia, MO
Timothy Fete | Columbia, MO
Mary Henry | Columbia, MO
Lyle Johnson | Columbia, MO
Margaret McDermott | Columbia, MO
Stuart Mullen | Columbia, MO
Matthew Williams | Columbia, MO

ELLIS FISCHER ADVISORY BOARD

Thomas Atkins | Columbia, MO
Mary Baker | Columbia, MO
Susan Brown | Sunrise Beach, MO
Ann Cleek | Columbia, MO
Ellen de Graffenreid | Columbia, MO
James Dye | Mexico, MO
Joan Firley | Jefferson City, MO
Bill Froke | Columbia, MO
Ingrid Headley | Columbia, MO
Carl Lensing | Rhineland, MO
Thomas Miltenberger | St. Albans, MO
David Starman | Columbia, MO
Suzi Wilson | Milan, MO

ELLIS FISCHER GALA PLANNING COMMITTEE

Judy Anderson | Lake Ozark, MO
Van Anderson | Lake Ozark, MO
Mary Baker | Columbia, MO
Ashley Brown | Jefferson City, MO
Mark Brown | Jefferson City, MO
Peter Brown | Sunrise Beach, MO
Susan Brown | Sunrise Beach, MO
Joan Firley | Jefferson City, MO
Carol Glennon | Lake Ozark, MO
Judy Hermann | Lake Ozark, MO
Pamela Huffstutter | Columbia, MO
Darlene Johnson | Columbia, MO
Michael Kelly | Saint Louis, MO
Janece Lawson | Sunrise Beach, MO
Pamela Lincoln | Sunrise Beach, MO
Caitlin Miller | Lake Ozark, MO
Sharon Naught | Jefferson City, MO
Sidney Neate | Columbia, MO
Vince Pace | Lake Ozark, MO
Alyson Peipert | Columbia, MO
Nancy Perry | Columbia, MO
Marsha Schoeneman | Sunrise Beach, MO

(CONTINUED ON NEXT PAGE)

Advancement Advisory Boards

Thomas Schultz | Columbia, MO
Cecilia Thomson | Lake Ozark, MO
Darlene Vance | Lake Ozark, MO
Sonja Wasden | Columbia, MO

MU HEALTH ADVISORY BOARD

Ron Ashworth | St. Louis, MO
Susan Brown | Sunrise Beach, MO
Craig Frazier | Springfield, MO
Pamela Henrickson | Columbia, MO
Gwendolyn Jones | Columbia, MO
R. Bowen Loftin | Columbia, MO
Teresa Maledy | Columbia, MO
Kit Stolen | Columbia, MO
James Whitaker | Mission Hill, KS
Jim Wisch | Jefferson City, MO
Tim Wolfe | Columbia, MO

SCHOOL OF HEALTH PROFESSIONS

SCHOOL OF HEALTH PROFESSIONS ALUMNI ORGANIZATION

Nancy Fay | Columbia, MO
Meichele Foster | Columbia, MO
Laura Franken | Overland Park, KS
Rose Hayden | Columbia, MO
Gwendolyn Jones | Columbia, MO
Ingrid Minge | Columbia, MO
Melissa Mirkay Redington | Ballwin, MO
Kevin Norris | Republic, MO
Richard Oliver | Columbia, MO
Craig Thompson | Warsaw, MO

SCHOOL OF HEALTH PROFESSIONS STRATEGIC DEVELOPMENT BOARD

David Ayers | Overland Park, KS
Michael Allen Carr | Leawood, KS
Keith Evans | Atlanta, GA
Nancy Fay | Columbia, MO
Mary Hass Sheid | West Plains, MO
Robert Tillman | Little Rock, AR

SCHOOL OF JOURNALISM

COLUMBIA MISSOURIAN BOARD

John Barth | St. Louis, MO
Kia Breaux-Randle | Kansas City, MO
Lewis Diuguid | Kansas City, MO
Margaret Duffy | Columbia, MO

Donald Etling | St. Louis, MO
Major Garrett | Washington, DC
Benjamin Holden | Reno, NV
Kevin Jones | Ballwin, MO
Kathryn Kranhold | Los Angeles, CA
Mark Maassen | Kansas City, MO
Karen Miller Pensiero | Verona, NJ
Charles Minshew | Orlando, FL
Elizabeth Osder | Culver City, CA
Ebony Reed | Quincy, MA
Mark Russell | Collierville, TN
Thomas Warhover | Columbia, MO
Benjamin Weir | Roach, MO
Dalton Wright | Conway, MO

SCHOOL OF LAW

LAW SCHOOL FOUNDATION BOARD

Jack Campbell | Kansas City, MO
Joyce Capshaw | St. Louis, MO
William Corrigan Jr. | St. Louis, MO
John Cowden | Prairie Village, KS
Kenneth Dean | Columbia, MO
Glen Glass | San Antonio, TX
Stephen Hill | Kansas City, MO
Karen Jordan | St. Louis, MO
Mark Kempton | Sedalia, MO
Rodney Loomer | Springfield, MO
Dudley McCarter | Creve Coeur, MO
Gayle Grissum Stratmann | St. Louis, MO
Mary Michael Sterchi | Prairie Village, KS
Brian Underwood | St. Louis, MO
Craig Van Matre | Columbia, MO
Michael Williams | Kansas City, MO

SCHOOL OF MEDICINE

HEALTH MANAGEMENT AND INFORMATICS ALUMNI ORGANIZATION

Lee Clinton | Perryville, MO
Allison Corry | St. Louis, MO
Justin Garry | Sioux Falls, SD
Valentino Grassetto | Mesa, AZ
Ryan Grueber | Columbia, MO
Teira Gunlock | Evanston, IL
Ryan Hamilton | Overland Park, KS
Daniel Kline | Wilmington, DE
Jared Long | Omaha, NE
Brad Martens | Columbia, MO
Nolan Miller | Houston, TX

Amy Myers | Lincoln, NE
Jeremy Schmidt | Gainesville, FL
William Schneider | St. Louis, MO
Sara Sternberger | Minneapolis, MN
Kristin Waller | Lincoln, NE
Justin Watkins | Nixa, MO
Aaron Weiser | Cincinnati, OH
Ronald Wiles | Chicago, IL

MEDICAL SCHOOL ALUMNI BOARD

Stephen Achuff | Towson, MD
Mark Adams | Columbia, MO
Susan Ailor | Columbia, MO
Thomas Alcox | Lee's Summit, MO
A. Atay | Cedar Rapids, IA
John Auner | Springfield, MO
Katherine Austin | Williamsburg, MO
Peggy Barjenbruch | Mexico, MO
Priya Bazzani | Hendersonville, TN
M. Beall | Mission Hills, KS
Brian Biggers | Springfield, MO
Gerianne Bliss | Warrensburg, MO
Frederick Brossart | Aledo, TX
Barbara Buchanan McCanse | Kansas City, MO
Michael Bukstein | Hannibal, MO
Nancy Bunge | Mexico, MO
Ronald Burt | Farmington, CT
Harold Burton | Gold River, CA
Rodney Cave | Edmond, OK
Thomas Cheek | Phoenix, AZ
Adam Clapper | Columbia, MO
Michael Clarke | Springfield, MO
Henry Clever | St. Charles, MO
Jeffrey Copeland | St. Charles, MO
Clifford Costley | Monett, MO
Albert Cross | Trenton, MO
Steven Daniels | West Fargo, ND
Ferdinand Del Pizzo | Creve Coeur, MO
Maureen Dempsey | Glen Allen, VA
Douglas Duncan | Springfield, MO
David Durst | Huntsville, AL
Melanie Elfrink | Marshall, MO
Milton English | Mercer Island, WA
Mary Faller | St. Louis, MO
Sammy Farrell | Washington, MO
Nicole Flood | Columbia, MO
Elizabeth Garrett | Columbia, MO
William Gilbert | Carmichael, CA
Stephen Godfrey | Ballwin, MO

(CONTINUED ON NEXT PAGE)

Advancement Advisory Boards

Loren Golitz | Denver, CO
Richard Guthrie | Wichita, KS
Patrick Harr | Shell Knob, MO
Tammy Hart | Princeton, MO
Joel Hassien | Hannibal, MO
Melvin Hayden | Camdenton, MO
Warren Heffron | Albuquerque, NM
Tomas Hinojosa | Reno, NV
Patricia Hirner | Hannibal, MO
Michael Hoeman | Springfield, MO
Kimberly Jamison | Columbia, MO
Martin Kanne | Parkville, MO
Dana King | Camdenton, MO
Kevin Komes | Columbia, MO
Donald Kuenzi | Kansas City, MO
William LaHue | Lexington, MO
John Laird | St. Louis, MO
Matthew LaValle | Columbia, MO
Curtis Long | Butler, MO
Harold Lurie | Springfield, MO
Brian Mahaffey | Ballwin, MO
Kathy Maupin | St. Louis, MO
Frederick McQueary | Springfield, MO
Jerry Meyer | Warrensburg, MO
David Miller | Wildwood, MO
Jay Milne | Springfield, MO
Carl Myers | Kansas City, MO
James Nahlik | Chesterfield, MO
Ann Peick | St. Louis, MO
Phillip Pitney | Louisiana, MO
David Poggemeier | St. Charles, MO
Lenard Politte | Columbia, MO
Lowell Pottenger | Joplin, MO
Michael Railey | St. Louis, MO
Timothy Reid | Carrollton, MO
Howard Roberts | Joplin, MO
Charles Rudkin | Columbia, MO
David Ryan | Kansas City, MO
Pradeep Sahota | Columbia, MO
Gene Schillie | Shawnee Mission, KS
Kenneth Scott | Clinton, MO
Janice Seabaugh | Columbia, MO
William See | Columbia, MO
Stephen Smith | Chesterfield, MO
Kenton Stringer | Republic, MO
Allison Swanson | Miramar, FL
Jeffrey Tedrow | Bolivar, MO
Mark Thoman | Port Orchard, WA
James Thomas | Chicago, IL
Amy Thompson | Sedalia, MO
James Turner | Washington, MO

Jonathan Valuck | Oklahoma City, OK
Richard Valuck | Hannibal, MO
James Van Riessen | Ozark, MO
Chan Vo | St. Louis, MO
Kelvin Walls | Kansas City, MO
Russell White | Aurora, MO
John Yeast | Kansas City, MO
Laine Young-Walker | Columbia, MO

MEDICAL SCHOOL FOUNDATION ADVISORY BOARD

Phillip Acuff | St. Joseph, MO
Earl Beeks | Glencoe, MO
Sidney Belshe | Lohman, MO
Robert Cheek | Columbia, MO
Steven Daniels | West Fargo, ND
Neal Dawson | Parma Heights, OH
Patrice Delafontaine | Columbia, MO
Mary Dohrmann | Columbia, MO
John Duff | Springfield, MO
Thomas Fischer | Hannibal, MO
Greg Flaker | Columbia, MO
Joshua Geltman | Columbia, MO
Victoria Gunn | Jefferson City, MO
John Hagan | Kansas City, MO
Timothy Harlan | Columbia, MO
William Hines | Florissant, MO
Joel Jeffries | Tallahassee, FL
Ann Johanson | St. Louis, MO
David Keller | Columbia, MO
Jerry Kennett | Columbia, MO
Harold Lurie | Springfield, MO
Lenard Politte | Columbia, MO
Edward Robertson | Jefferson City, MO
Garth Russell | Palm Beach Gardens, FL
Harry Ruth | Quincy, IL
Raymond Schondelmeyer | Columbia, MO
Stephen Smith | Chesterfield, MO
Wes Stricker | Columbia, MO

SCHOOL OF MEDICINE CAMPAIGN COMMITTEE

Earl Beeks | Glencoe, MO
Yolanda Bledsoe | Florissant, MO
Michael Bukstein | Hannibal, MO
Theodore Choma | Columbia, MO
Damon Clines | St. Louis, MO
William Crist | Naples, FL
Timothy Fete | Columbia, MO
Frederick Hausheer | San Antonio, TX
Irl Hirsch | Bellevue, WA

Jane Knapp | Roeland Park, KS
Donald Myears | Springfield, MO
Susan Nagel | Columbia, MO
John Yeast | Kansas City, MO

SINCLAIR SCHOOL OF NURSING

SINCLAIR SCHOOL OF NURSING ALUMNI ORGANIZATION

Becky Arand | Ballwin, MO
Karen Backus | Kennesaw, GA
Mary Bayer | Columbia, MO
Mary Beck | Columbia, MO
Jane Cooper | Columbia, MO
Doris Davis | Columbia, MO
Susan Devaney | Hallsville, MO
Eileen Dyer | St. Joseph, MO
Doris England | Columbia, IL
Cordelia Esry | Hamilton, MO
Amanda Hall | St. Louis, MO
Ardith Harmon | Kahoka, MO
Nancy Hubbard | Columbia, MO
Darlene Huff | Columbia, MO
Theresa Jackson | Columbia, MO
Ashley Jones | Columbia, MO
Glenda Kelly | Columbia, MO
Candace Lindley | Chillicothe, MO
Jessica Loos | St. Charles, MO
Annette Lueckenotte | O'Fallon, MO
Linda McEwen | Lee's Summit, MO
Julie Miller | California, MO
Sherry Mustapha | Kansas City, MO
Kathryn Musterman | Columbia, MO
Donna Otto | Columbia, MO
Richard Otto | Columbia, MO
Elizabeth Pettitt | Lebanon, MO
Jamie Ratusznik | Fort Worth, TX
Gail Roberson | Leawood, KS
Margaret Shorr | Columbia, MO
Sharon Stowers | Centralia, MO
Thelma Thompson | Columbia, MO
Nancy Tune Stephens | Columbia, MO
Erin Wilson | Sedalia, MO
Darrin Young | Columbia, MO

SINCLAIR SCHOOL OF NURSING CAMPAIGN COMMITTEE

Karen Ehlmann | St. Charles, MO
Linda Klein | Sarasota, FL

(CONTINUED ON NEXT PAGE)

Advancement Advisory Boards

Sharon Krumm | Baltimore, MD
Gregory Lind | Seattle, WA
Richard Miller | Columbia, MO
Lisa Piccone | O'Fallon, MO
Jack Smith | Columbia, MO

STUDENT AFFAIRS

PARENT LEADERSHIP COUNCIL

Claire Adrian | Carl Junction, MO
Matthew Adrian | Carl Junction, MO
Joel Alexander | Springfield, MO
Lisa Alexander | Springfield, MO
Carla Barlow | Hingham, MA
Peter Barlow | Hingham, MA
Cindy Hoffman Bergman | Media, PA
Martin Bergman | Media, PA
Brian Fenimore | Leawood, KS
Lorna Fenimore | Leawood, KS
Susan Greteman | Houston, TX
Kirby Greteman | Houston, TX
Helen Gronauer | Memphis, TN
Jo Beth Harrison | Suwanee, GA
Carol Janssen | Houston, TX
Mike Janssen | Houston, TX
Jeff Jensen | Ballwin, MO
Nancy Jensen | Ballwin, MO
Kevin Johnson | Wellesley Hills, MA
Shari Johnson | Wellesley Hills, MA
Charlie Kassly | Fairview Heights, IL
Jenny Kassly | Fairview Heights, IL
Cheryl Lothian | Elmhurst, IL
John Lothian | Elmhurst, IL
Tamee Reese | St. Louis, MO
Dennis Stoutenburgh | Dallas, TX
Pam Stoutenburgh | Dallas, TX

STUDENT AFFAIRS

ADVANCEMENT BOARD

Matthew Broffman | Orlando, FL
Charlene Brophy | Houston, TX
Ashley Dean | Prairie Village, KS
Steffani Lautenschlager | St. Louis, MO
Valerie Lawlor | Dallas, TX
Steven McCartan | Leawood, KS
Domingo Pacheco | Downingtown, PA
Lucinda Rice-Petrie | Kansas City, MO
Marissa Schaffner | Olathe, KS
Lori Whitlow | Dallas, TX

TRUMAN SCHOOL OF PUBLIC AFFAIRS

TRUMAN SCHOOL OF PUBLIC AFFAIRS ALUMNI ADVISORY BOARD

H. Doug Adams | St. Louis, MO
Victor Arnold | Columbia, MO
Robert Boone | Jefferson City, MO
Michael Butler | Jefferson City, MO
C.K. Casteel | St. Louis, MO
Rebecca Crowder | Overland Park, KS
Adam Crumbliss | Columbia, MO
Marilou Goodyear | Olathe, KS
Charles Gross | St. Charles, MO
Stephen Gurwell | Jefferson City, MO
Christina Hammers | Monett, MO
David Kormann | Jefferson City, MO
Steven Krause | St. Louis, MO
George Liyeos | St. Louis, MO
Joseph Martin | Jefferson City, MO
James Moody | Jefferson City, MO
Mary Phillips | Jefferson City, MO
Donna Prenger | Jefferson City, MO
James Pyle | Kansas City, MO
Thomas Sadowski | Jefferson City, MO
Carmen Schulze | Warrenton, MO
Zim Schwartze | Springfield, MO
Kathryn Siquefield | Columbia, MO
Misty Snodgrass | Jefferson City, MO
Kristen Sorth | St. Louis, MO
Michael Stahl | Staunton, VA
Richard Telthorst | Jefferson City, MO
H. William Watkins | Rocheport, MO



Tom Hiles Vice Chancellor for Advancement

hilest@missouri.edu
573-882-7703

As Vice Chancellor for University Advancement, Tom directs MU's fundraising and alumni programs, which will announce Mizzou's \$1 billion-plus campaign in October 2015. Tom leads a dynamic Advancement team committed to building a culture of excellence through passion, teamwork, and engagement.

Prior to coming to MU in July 2012, Tom had served as Vice President for Institutional Advancement/ President of the Foundation at Bowling Green State University in Bowling Green, Ohio, since 2010. He was Vice President for University Advancement at Western Kentucky University and Executive Director of the WKU Foundation from 1998 to 2010. Tom began his career in development in 1985 at DePaul University, held a variety of fundraising positions at the University of Maryland, and served as Director of Campaigns at Rice University.



Orrie Covert Senior Associate Vice Chancellor for Advancement - Constituent Units

covert@missouri.edu
573-882-7373

As Senior Associate Vice Chancellor, Orrie oversees the professional fundraising staff for the schools and colleges, intercollegiate athletics, and health systems, directing the planning and execution of a coordinated fundraising program. Orrie also advises the Vice Chancellor on fundraising goals, plans, strategies, and resource allocation.

Prior to coming to MU in April 2013, Orrie served as the Assistant Vice President for Development at the University of Florida in Gainesville. He was Vice President for University Advancement and Executive Director for the Northwest Foundation at Northwest Missouri State University from 2005 to 2011. Orrie began his development career in 2002 as Director of Development at Syracuse University.



Todd McCubbin Associate Vice Chancellor for Advancement & Executive Director of the Mizzou Alumni Association

mccubbint@missouri.edu
573-884-9092

Todd McCubbin is the Associate Vice Chancellor for Alumni Relations and Executive Director of the Mizzou Alumni Association. As the chief alumni relations officer at Mizzou, Todd leads the 45,000-member association and the Mizzou Annual Fund. He directs a staff of 30 and works closely with the association's governing board of directors. Todd joined the MAA staff in 1995 as a Coordinator of Alumni Relations.



Wayne Chipman Assistant Vice Chancellor for Advancement – University Programs

chipmanjw@missouri.edu
573-884-9728

The Assistant Vice Chancellor for Advancement - University Programs oversees the operation of central fundraising operations, including Gift Planning, Endowments, Regional Programs, International Advancement, Graduate Studies, Honors College Advancement, and Corporate and Foundation Relations. Wayne also serves as the University liaison to affiliated foundations.

Prior to coming to MU in 2003, Wayne served as the Director for Major and Planned Gifts at Truman State University in Kirksville, Missouri. He also was a Director of Development at Drury University in Springfield, Missouri, from 1997 to 2001. Wayne practiced law and worked in economic development prior to joining the development staff at Drury.



Ron Kelley Assistant Vice Chancellor for Advancement – Principal Gifts, Stewardship, and Creative Services

kelleyr@missouri.edu
573-884-3678

Ron is responsible for the stewardship of MU's most prolific donors. Ron provides leadership for stewardship, creative services, and the fundraising program for the Mizzou Advantage.

This is Ron's second stint at MU. Prior to coming back to MU in 2006, Ron served as Director of Corporate and Foundation Relations at Miami University of Ohio. Previously, Ron served in a variety of roles at Mizzou - from Advancement to Director of External, Alumni and Student Relations at the School of Journalism, where he also taught in the Broadcast News department.



Paul Ross Assistant Vice Chancellor for Advancement - Health Systems

rosspr@missouri.edu
573-884-8234

Paul works closely with schools, colleges, and units across the health science disciplines. He is responsible for a broad range of development activities, focused primarily on major gifts, leading a high-performing team of fundraisers, and providing strategic direction to his team for the comprehensive campaign.

Prior to joining Mizzou, Paul held leadership roles in the nonprofit and for-profit sectors. Most recently, he was Director of Major and Planned Giving for the University of Wisconsin-Milwaukee. Paul also has been a Senior Director of Development with the University of Florida and a Principal Gift Officer with Mayo Clinic.

Passionate about education, Paul has served as an adjunct professor for Cardinal Stritch University (CSU) and adjunct professor for University of Wisconsin's Helen Bader Institute for Nonprofit Management.

Paul received his undergraduate degree in business from CSU in Milwaukee, Wisconsin, and went on to earn a Master of Business Administration degree from Marquette University's Graduate School of Business. Paul also has completed leadership training at the renowned Center for Creative Leadership.



Gina Sholtis

Assistant Vice Chancellor for Advancement - Constituent Units

sholtisg@missouri.edu
573-884-6712

As Assistant Vice Chancellor, Gina is responsible for a broad range of development activities, focused primarily on acquiring major gifts, leading a talented team of fundraisers across campus, and providing strategic support for the comprehensive campaign. Gina also interacts with deans, university leadership, campaign volunteers, and alumni to build strong relationships among MU's constituencies.

Previously, Gina led the development efforts for the School of Law at Washington University in St Louis. She also has served as the Assistant Dean for Development and Alumni Relations at the Saint Louis University School of Law.



Shannon Tindall-Jarnegan

Assistant Vice Chancellor for Advancement Services

tindalls@missouri.edu
573-884-3312

As the Assistant Vice Chancellor for Advancement Services, Shannon is responsible for administering and maintaining the structure of the University of Missouri's Advancement operations. Shannon and her team gather, establish, manage, and distribute information to guide the division's progress and overall business decisions. They establish principles, maintain guidelines, and investigate technical and financial solutions to reduce risk and maximize philanthropic investment in MU.

Areas of responsibility include: Division Budget and Finance; Advancement Compliance and Auditing; Database Management and Reporting; Advancement Records Management; Organizational and Professional Development; Personnel Management/Payroll; Prospect Research; and the Technical and Informational Support Group.

Shannon has served in a number of roles within Advancement during her 14 years at the University. Prior to her current role, she served as Executive Director of Budget, Finance, and Employee Relations. Shannon received her undergraduate degree in Business with triple emphases in Management, Accounting, and Finance from Columbia College and went on to earn a Master of Public Administration degree with an emphasis in Public Policy from the University of Missouri's Truman School of Public Affairs.



Deb Snellen

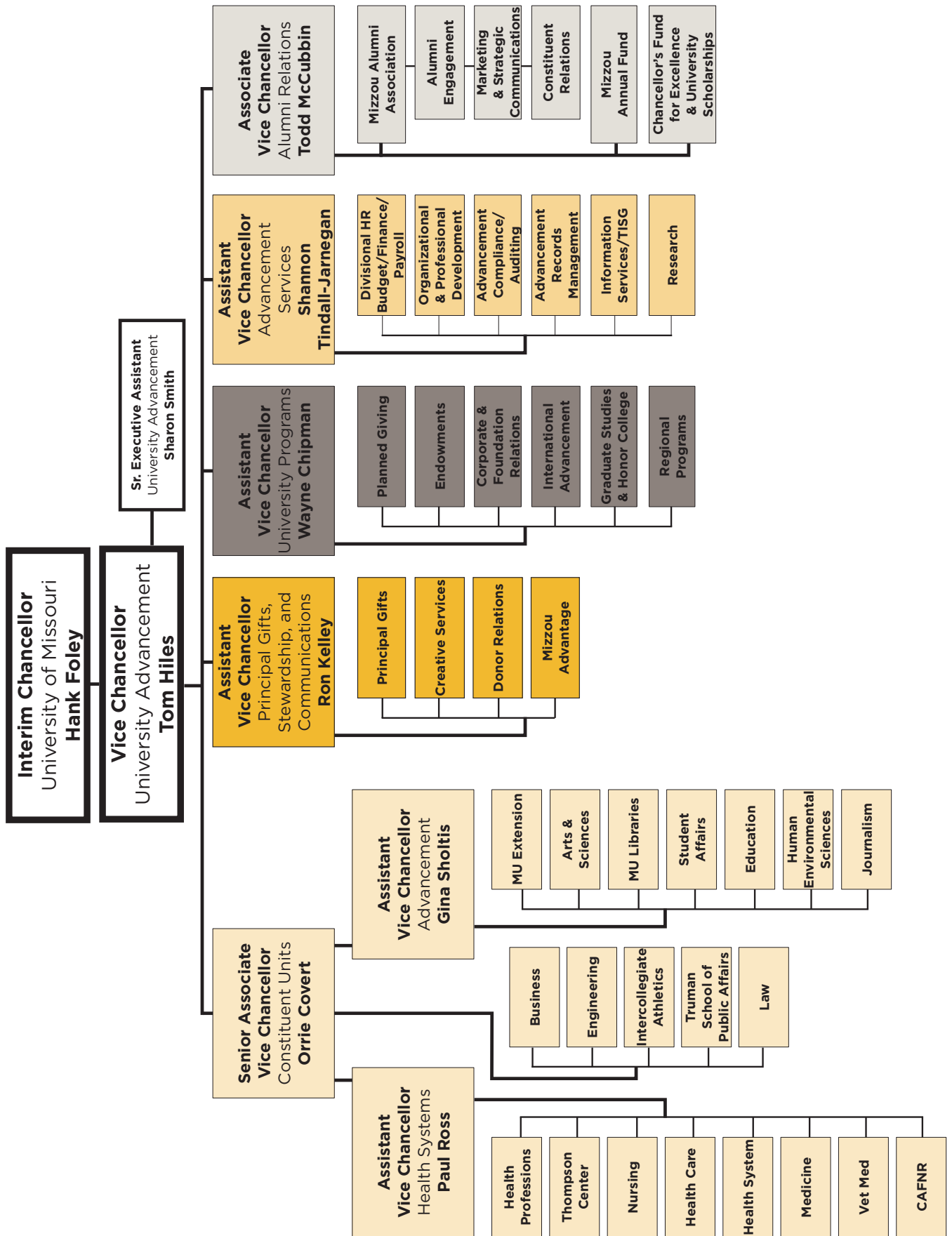
Director of Organizational and Professional Development

snellend@missouri.edu
573-884-9789

Deb is passionate about working to increase the capabilities of Mizzou Advancement staff to shape the future of MU. Her areas of expertise include talent management, performance improvement, learning and development, and organizational development. She leverages these strengths to provide strategic direction and facilitation of initiatives related to staff engagement and communication, strategic and workforce planning, job design, organizational structure and processes, talent acquisition, learning and development, performance management and improvement, career paths, succession planning, and recognition programs.

For 25 years prior to joining MU Advancement, Deb owned a nationally known consulting firm specializing in training and development options for improving organizational performance. She also was a member of the faculty for the U.S. Chamber of Commerce's Institute for Organization Management. Deb has published more than 100 articles on leadership and management.

Deb received a bachelor's degree in Education and a master's degree in Communication with an emphasis in Organizational Communication and Training from Mizzou. She is a Past President of the Mizzou Alumni Association and a former Tiger mascot.



Advancement – The Office of Advancement seeks to encourage philanthropic support of Mizzou by matching donor passions with university priorities.

Alumni – Graduates or former students of the University of Missouri.

Annual Giving – The Annual Giving program exists to provide the University of Missouri with financial support for scholarships, special programs, research facility, technological upgrades, and other needs.

Association of American Universities – The Association of American Universities (AAU) comprises 62 leading public and private research universities in the United States and Canada. Founded in 1900 to advance the international standing of U.S. research universities, the AAU today focuses on issues that are important to research-intensive universities, such as funding for research, research policy issues and graduate and undergraduate education.

Beneficiary – The person and/or organization that receives the benefits (usually assets or income) of a will, trust, IRA, life insurance, etc.

Beneficiary Designation – Clearly identifies how specific assets will be distributed after your lifetime.

Bequest – A gift of property or assets to a beneficiary as defined in a will.

Campaign Cabinet – The Campaign Cabinet, in collaboration with the Mizzou Office of Advancement, is responsible for the direction of the *Mizzou: Our Time to Lead* campaign.

Campus Renaissance – One of three priorities for the *Mizzou: Our Time to Lead* comprehensive campaign, with a focus on new and renovated buildings to make Mizzou a better place to live and learn.

Cash gift – A gift made most often by check or credit card (rarely cash).

Chancellor's Fund for Excellence – Mizzou's campus-wide unrestricted gift fund (est. 2001) to allow campus leadership to address unforeseen challenges and unexpected opportunities

Charitable gift annuity – A charitable gift annuity (CGA) is a simple contractual agreement between MU and a donor who gives a minimum of \$10,000 in cash or securities to the University in exchange for regular fixed-amount payments over a period measured by one or two lives. The contract directs the use of the remainder based on the donor's original instructions.

Donor advised fund – a charitable giving vehicle administered by a third party, such as a community foundation, and created for the purpose of managing charitable donations on behalf of an organization, family, or individual.

Endowed faculty positions – Faculty positions permanently funded by endowments created specifically for that purpose. A variety of funding levels are available (including faculty scholar, professorship, distinguished professorship, chair, and endowed chair). Endowed faculty positions help Mizzou attract and retain top talent.

Endowment – A fund or collection of funds that produces expendable annual distributions for MU. Endowments are important to MU because they create ongoing sources of income independent of state support and changes in the economic climate.

Expendable fund – A fund from which all monies may be drawn for current use.

Faculty Scholar – An endowed faculty position typically awarded to accomplished early-career researchers.

Fellowship – Financial support for a graduate student to pursue his or her degree with no associated teaching or research duties.

Graduate assistant – a person who serves in a support role (assistantship) at a university, usually while completing post-graduate education. The individual typically assists professors with instructional responsibilities as teaching assistants or with academic research responsibilities as research assistants, aids coaches with an athletic team, or is employed by other university departments (such as housing or academic advising) in an entry-level capacity.

Honorarium - Any gift made in recognition or in honor of an individual or other entity.

In-Kind Gift - A charitable gift of goods or services rather than money.

Leadership/Major/Principal gifts - a principal gift is an extraordinary commitment of \$1 million or more

Matching Gifts - A charitable practice in which an individual, organization, or government entity pledges to match donations made by other donors. Many companies encourage their employees to make charitable contributions by matching their donations, increasing the impact of their employees' philanthropic support.

Memorial - Any gift made in someone's memory.

Mizzou Advantage - The Mizzou Advantage initiative fosters interdisciplinary collaboration among faculty, staff, students and external partners to address and solve real-world needs and problems in four areas of strength identified at the University of Missouri: Food for the Future, Media of the Future, One Health/One Medicine, and Sustainable Energy

Mizzou Give Direct - Mizzou's online crowdfunding solution.
(<https://donatetomu.missouri.edu/givedirect/>)

Mizzou Student Foundation (MSF) - MSF is a student organization dedicated to educating others about how charitable giving enhances the student experience.

Payroll deduction - a method of giving where a designated amount is donated from your paycheck each month.

Planned giving - Any type of donation that requires planning to accomplish and often defers transfer to the future. Typical planned gifts include bequests through a will, assets given through a revocable living trust, beneficiary designations of retirement accounts, other financial accounts and life insurance policies, and life income arrangements such as charitable gift annuities. Planned gifts can also include outright gifts of

securities, real estate, and other property that require assistance of advisors and acceptance by the University.

Pledge - a promise to make a gift to the University at a future time.

Primary gift credit - Tax credit, also known as "hard credit," assigned only to the legal donor.

Regional Programs - Representatives of the Regional Programs advancement staff travel across the nation to help alumni and friends connect with Mizzou wherever they live.

Restricted gift - Gifts made to MU to be used in accordance with donor-created guidelines.

Scholarship - Financial aid awarded to a student. Criteria can include academic achievement, financial need, field of study, student demographics, and more.

Signature Centers and Institutes - One of three areas of emphasis for the *Mizzou: Our Time to Lead* campaign focusing on centers of excellence that will position MU at the forefront of research and education.

Signature hires - Key hires made by the Chancellor to further our mission.

Tiger Scholarship Fund - A fundraising program within the Department of Intercollegiate Athletics.

Total gift credit - Total gift credit includes assigned gift credit beyond the donor record. Includes gifts-in-kind, matching gifts, and other "soft credit."

Unrestricted gift - Gifts made to MU with no limitations on how the gift is to be used.